

**MARCH 2023**

**DELIVERED FREE**  
(by our wonderful volunteers)

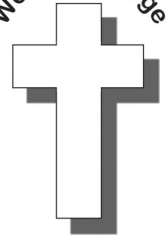
**THE CHURCH PARISH MAGAZINE OF WOOTTON**

# *The Bridge*

*Building Bridges in the Community*

St Edmund's  
& St Mark's

Wootton Bridge



## **Stealing (a) March**



Does it count as self-denial if I give up worrying for Lent? After everything we've all been through in the year or so since the picture on this page was taken, it does seem that the coming Spring offers us an opportunity to give ourselves a bit of a reset. We push at the things that concern us, and all that happens is that they seem to be that much more in our face. Maybe it's time to back off and enjoy the wider view.

That Jesus guy we Christians so often talk about was always taking time out to back off and reset, often to the consternation of his closest friends. But prayer and contemplation didn't make him more relaxed or easier to be with. He routinely calls the most religious people of his day "hypocrites", to their faces. A foreign woman asks for his help, and he refers to her countrymen as "dogs" (though the woman does push back, and Jesus praises her for doing so). He is on trial for his life, the Roman Governor asks him if he is the King of the Jews, and his reply is, in effect, "Whatever". In short, the resetting process energised him to be what we would least expect him to be.

In at least one respect, Spring is a bit like that. As a child, I was taught that the first day of Spring was March 21st (by my mother, whose birthday was on that day). More recently, the Met. Office have decreed (well, suggested) that Spring begins at the beginning of March. When you look at the picture, taken on 6th March 2022, it is clear that they have a point. Spring is surprising us by coming sooner than we thought. And we need to be prepared to take advantage of it, by feeding off the energy and, who knows, surprising ourselves and those around us with the resulting reset.

We have an enormous advantage. We live on an island where, to quote its motto, "all this beauty is of God". We don't even need to go as far as Mottistone Manor (the location of the photo) to get ourselves that reset. As soon as the sun comes out, it's time to steal March and capture Spring.

*David Bennison*

***For March services, please see Page 3***





## Bring Learning Alive!



*Mrs Jane Wilford  
Headteacher*

Wherever we can, we try to bring learning alive and make it real! Research shows that the best learning takes place when children are fully engaged and 'hooked' into their learning. With children accessing more and more technology often learning comes from a screen and children are missing out on real life experiences. For this reason, we are so keen to provide the children at Wootton with as many real-life experiences that we can for them to embed their learning. For example, when exploring animal habitats our Year 1 class went to the Animal Wildheart Sanctuary in Sandown and our Year 3 children went to Brading Roman Villa to continue their learning about the Roman era. However, we are aware of the impact that the cost of these educational visits has for families, in particular with the current climate, so staff work hard to ensure experiences are affordable for all. We therefore provided our Year 4 children with a wonderful experience in school. An amazing amateur group came to school to perform a Viking day and the children had a wonderful experience. The group dressed up, brought a whole range of resources to share with the children and they ended the experience with a Viking battle on the playground! As you can imagine the children had a wonderful time and have continued talking about their learning experiences ever since!

We continue to be so very proud of all our children at Wootton as they go from strength to strength in all aspects of their learning and we look forward to sharing more news with you next month.



## WARM HUBS IN WOOTTON

Both churches are in Station Road. The Methodist Church is opposite Wootton Steam Railway (park in Steam Railway car park), St Mark's Church is nearer to the traffic lights (car park around the back of the church).

### WEEK 1

Monday	10-12 Methodist Church coffee morning all welcome.
Tuesday	-
Wednesday	10-12 Methodist Church Messy Church for families.
Thursday	-
Friday	-
Saturday Sunday	-

### WEEK 2

Monday	10-12 Methodist Church coffee morning all welcome.
Tuesday	10-11.30 St Mark's Church Marks Brothers Bacon Butty Group. All welcome.
Wednesday	10-11.30 St Mark's Church Little Lions Toddler Group for families £2 per family. 11am Methodist Church Armchair keepfit all welcome £5 check first on 882809.
Thursday	2-4pm St Mark's Church Elephant Club. All welcome including memory problems.
Friday	-
Saturday	-
Sunday	-

### WEEK 3

Monday	10-12 Methodist Church coffee morning. All welcome.
Tuesday	-
Wednesday	10-11.30 St Mark's Church Little Lions Toddler Group for families. £2 per family 11am Methodist Church Armchair keepfit. All welcome. £5 check first on 882809.
Thursday	-
Friday	-
Saturday	-
Sunday	-

### WEEK 4

Monday	10-12 Methodist Church coffee morning. All welcome.
Tuesday	4th Tuesday of the month: Coffee morning at St Mark's Church 9-12.
Wednesday	10-11.30 St Mark's Church Little Lions toddler group for families. £2 per family. 11am Methodist Church Armchair keepfit. All welcome. £5 check first on 882809.
Thursday	-
Friday	-
Saturday	-

## New Fun Holiday Club at St Mark's Church

We are delighted to be offering two children's fun club sessions during the Easter holiday. These sessions are open to any children from Reception to Year 6.

The Fun Holiday Club will involve art and craft activities, cooking, board and active games. We will also provide singing and story-telling activities. Children will be offered a snack during the morning and drinks will be available throughout the session. The focus will be on having fun.

The sessions will be led by staff who have all had appropriate safeguarding training and have DBS clearance. Children attending will need to be brought by a responsible adult (adults are not expected to stay) who will be asked to sign them in and provide information regarding any special needs and an emergency contact number.

The sessions will be 9.30 am – 12 noon on Tuesday 4 April and Wednesday 12 April 2023. If these are successful then there will be further sessions during each school holiday.

Numbers will be limited and therefore will be allocated on a first come basis. If you are interested in your child attending then please contact us at [funclub.stmarks@gmail.com](mailto:funclub.stmarks@gmail.com). no later than Friday 31 March 2023.



## Church Services in Wootton during March

(Please be aware that all services of Holy Communion are subject to a priest being available to take the service.)

The relaxation of COVID regulations means that it is no longer necessary to book for services but you will be asked to sanitize your hands.  
Please wear a mask if you would feel more comfortable with it.  
We are now able to offer the Brunch service to everyone!

### ST EDMUND'S

Sun 5th	0800 Holy Communion
Wed 8th	0930 Holy Communion
Sun 12th	1830 Evensong
Wed 15th	0930 Holy Communion
Wed 22nd	0930 Holy Communion
Sun 26th	1830 Evensong
Wed 29th	0930 Holy Communion

### ST MARK'S

Wed 1st	1115 Cafe Communion
Sun 5th	0930 Brunch
Sun 12th	0930 Holy Communion with Explorers
Sun 19th	0930 Morning Worship with Big Mac talk
Sun 26th	0930 Holy Communion with Explorers



## From the Parish Archive - The memoirs of R Williams

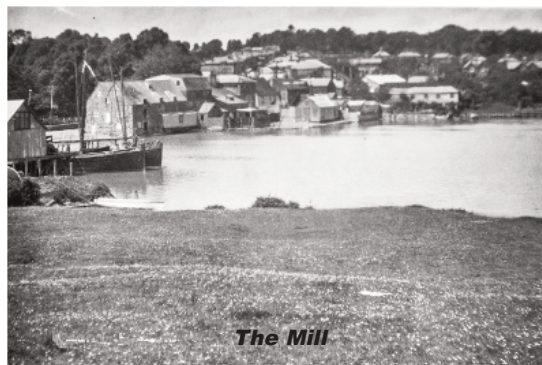
(part one, to be continued)

I hope, what follows, will give a general picture of the Wootton village in the early 1900's, so perhaps this brief account of its life then will be of interest.

Obviously, the village started around the Cornmill built in about 1070, followed by the Sloop Inn (once the Miller's home), the Bakery, the Post Office and store next to the chapel, and the little general shop. The workers' cottages close by are among the oldest standing in Wootton today

Development was very slow, there being only 152 inhabitants in 1900, increasing gradually until the 2nd World War, and very rapidly since. With the exception of the High Street, the roads were rough gravel, and the only pavement commenced just below the Jubilee Memorial and extended to the shops.

The High Street was tarred during the summer, an operation we all liked to watch. A large iron boiler on four wheels and drawn by a horse, would arrive. A coal furnace under the boiler was lit; barrels of treacle-like tar would be hoisted above the boiler and emptied into it. On being heated the tar became thin and two men working a pump, forced the tar through a hose to a third man, who sprayed the road surface with a thin coat. Other men following blinded (covered) the hot tar with grit, giving a waterproof surface. Heavy footwear was necessary on such roads, and most boys wore hobnailed boots, some even clogs, although lighter boots were worn on Sundays having rubber soles and heels, which to save expense, were often repaired from the outside cover of an old tyre. There were several boot and shoe makers in the village but father, or the boys, did the repairs for the family. No public transport passed through the village except the stage coach. The railway station was a mile away and was used only when one wished to travel further than Newport or Ryde, it being quicker to walk to them. Horse drawn vehicles were used for all purposes. A few private cars were to be seen, but no lorries.



the village people living in a close community and independent of outside help, as there were excellent craftsmen from all walks of life in the village who could make, repair or cope with any problem that arose. For instance, the local smithy/wheelwright could shoe horses, make any item from metal or make a cart or wagon to suit requirements. His skills were endless. Water for domestic use was obtained from wells dug in the gardens, or if near the old Bakery, from the village pump on the corner boundary wall opposite the entrance to Lakeside. The first piped water was from a well in the Church fields near the Sunday school to the Jubilee Memorial Fountain in 1887, followed soon after by a main from Newport.

Main drainage came in the late 1800's. Prior to this the earth closet was in use. This consisted, of a small building at the bottom of the garden underneath an elder tree, which kept the flies away. Inside could be a one, two or three "holer" according to the wealth of the family. A one "holer" had a wooden seat with a hole in the centre and a bucket underneath, with ash nearby to cover after use. A two "holer" had one seat as described before, about 18 ins. high for Mum and Dad, and a lower one 15 ins. high for the children. The ultimate three "holer" included a seat only 10 ins. high for toddlers. The door was about 6 inches short at the top and 9 at the bottom to allow ventilation. A trip after dark was accomplished with a candle in a jam jar.

The first bake-house, opposite the Mill, used fag-gots as fuel. These would be fired in the brick-built oven until the right temperature was reached. The fire and ash would be cleared away and the oven floor mopped. Bread would then be placed on the floor until cooked, after which cakes would be put in. Small ash from the firing could often be seen on the bottom of loaves. Farms and rural dwellings had similar but smaller versions of these ovens.

The lack of easy travel from place to place led to

to be continued..... **tb**



## For Your Diary ... What's On ...

**KEEP ACTIVE MOVE MORE CLASSES.** BINSTED COMMUNITY CENTRE ON TUESDAYS AT 11.20am AND WHIPPINGHAM VILLAGE HALL ON WEDNESDAYS AT 9.45am, 11am, 12.15pm, 1.30pm, 4pm. AND FRIDAYS AT 10.10am at ARRETON VILLAGE HALL. Go at your own pace exercise program to help improve strength, stamina and balance. CONTACT: **ANDY SAVAGE 07779 616189**

**KEEP ACTIVE RELAX MORE (K.A.R.M.) CLASSES.** SANDOWN BROADWAY CENTRE ON MONDAYS AT 4.15pm AND WHIPPINGHAM VILLAGE HALL ON WEDNESDAYS AT 2.45pm. A gentle movement program to calm and relax the body that is easy to learn and based on Tai Chi principles and can be done seated or standing. CONTACT: **ANDY SAVAGE 07779 616189**

**BREATHE EASY ISLE OF WIGHT SUPPORT GROUP** FOR ISLANDERS LIVING WITH CHRONIC LUNG CONDITIONS. MEETINGS HELD AT ARRETON VILLAGE HALL ON THE FIRST TUESDAY OF THE MONTH FROM 2PM TO 4PM. FOR FURTHER INFO GO TO [HTTPS://BREATHEEASYIOW.ORG](https://breatheeasyiow.org) OR CONTACT: **ANDY SAVAGE 07779 616189**

**PARKINSONS UK ISLE OF WIGHT** HAVE REGULAR WEEKLY EXERCISE CLASSES AT ARRETON VILLAGE HALL ON FRIDAYS AT 11.15am, 12.25pm and 2pm SPECIFICALLY SUITED FOR ANYONE LIVING WITH PARKINSONS. FOR FURTHER INFO CONTACT **ANDY SAVAGE 07779 616189**

### Little Lions Toddler Group

This group meets at St Mark's Church 10 to 11.30am, every 2nd, 3rd & 4th Wednesday of the month at St Mark's Church. Being a new parent can be very lonely and it is always helpful to meet people who are walking the same path. So if you are a new parent, or a parent with lively toddlers on your hands, come and join us. Your children will learn to play with other children and you can talk to people who are on the same difficult journey as you. £2 per session - coffee and sympathy provided!

On the first Wednesday of the month, Wootton Methodist Church runs a Messy Church session.

### Elephant Club

If someone you care for has memory problems, the ELEPHANT CLUB will be meeting at St Mark's Church between 2-4pm every 2nd Thursday of the month. If you would like to exercise "*the little grey cells*" whilst having a laugh and eating cake, do come and join us. We would love to see you.

### WOOTTON BRIDGE METHODISTS

Every Monday Morning 10.am till 12 noon. Come and enjoy coffee and chat at Wootton Methodist Church from 10am-12 noon every Monday until further notice. Everyone welcome.

**Whitgar Morris**, meet in the coffee lounge at St Mark's on Tuesdays 7:30pm - 9:30pm. New members, dancers or musicians welcome. For further details ring 880118.

### Marks Brothers Bacon Butty Group

This group meets the second Tuesday of the month at 10.00am in St Mark's coffee lounge. The opportunity for the men of the village who would like to sort the world out over a coffee and a bacon butty. Please let Harry Kirby know if you will be attending. A small, voluntary, contribution towards costs always appreciated. 07814809083 or harryskirby@btinternet.com" The group is very friendly and welcoming.

### Coffee Morning at St. Mark's.

This is not to be missed! Free coffee and the most amazing cakes plus a warm welcome – open to everyone. Do come!

**CREEKSIDE WOMEN'S INSTITUTE (WI)** - Everyone welcome at 7pm on the second Wednesday of each month (except August) at the Methodist Church, Station Road, Wootton Bridge, IW. Visitors and new members always welcome. Contact: Carole Barfoot 882466.

### March 2nd

Liz Earle demo at the Ryde shop

### March 8th

Members' Meeting.

Francis Quinn is sharing her knowledge about St Catherines Lighthouse

Bookclub - dates decided at the meetings.

Craft group - see Newsletter

Zoom games - Mondays at 7.30pm

Out to Dinner - alternate months

Photography group - see the Newsletter

Ten Pin Bowling - 1st Wednesday in the month.

Theatre Club - see Newsletter

Knit and Natter - 4th Wednesday on the month except when the Kurlers are having fun.

Film night - see the Newsletter

## GREEN CLEAN

*Be green while we clean!*

Eco-friendly domestic cleaners, with our own products & equipment, want to clean your home or office.

Local, friendly, reliable, insured  
To discuss your requirements call Julia

**01983 716464**  
**Mobile: 0788 0784 906**



### ROOFING AND BUILDING

Tel: Richard  
(01983) 611422

Slates, Tiles and Flat Roofing - Lead Flashings, Valleys and Bays, etc. - Insurance Re-roofs and any size repairs - General Building and Contract Work

**Mobile: 07971 815301**

## Steven CHAPPLE

(incorporating Paul Chapple Heating)

**PLUMBING and HEATING  
COMPLETE BATHROOMS  
and TILING**

Telephone: 612611

Mobile: 07774 892712



**CIPHE**  
Chartered Institute of Plumbing  
and Heating Engineering



**Do you enjoy  
singing?**

St. Mark's Church  
Choir meets on  
Thursday evening  
6.30-7.30pm. We sing

inspiring and uplifting hymns and anthems. No experience necessary. Our practices are for preparing the choir to sing at church services and occasional social performances.

*Come along and give it a try.*

Any questions please e-mail:

David: davidmcculloch1968@gmail.com

## PHIL MANSFIELD Building Services

- EXTENSIONS • DRAINAGE
- BRICKWORK • BLOCK PAVING
- EXTERNAL MAINTENANCE
- PATHS AND PATIOS • DRIVES

**Mobile 07952 460269**

**Home/evenings 01983 615724**

## houseproud !

'solutions by Angela'

**quality cleaning & ironing services**

*help and support that works for you  
(further assistance readily available)*

**Call 07912 432 835**

## The Bridge

is Wootton's community magazine and  
it needs contributors!

Do you have a story to tell, a piece of local history, or information about local activities?  
**If you do, we'd like to hear from you.**

We can help you put together, and layout, your articles; even if you "can't write", we can help.

**If contributing to *The Bridge* is something that interests you, contact:  
David Bennison on 882783**

Interested in joining our loyal  
group of volunteer deliverers?

More details  
from David  
Bennison on  
882783



### Wootton Bridge Townswomen's Guild

We are at Methodist Church Station Road  
every 3rd Friday of the month 2-4pm

Please join us or call

**Pauline 01983 759350**

### Professor Clean & Clearance

Local House Clearance experts. Whether it's a house, rental, garage, garden, any items.

We specialise in hoarding issues and bereavement clearance. We are a family run business that provides an outstanding and professional service Islandwide.

Committed to environmentally responsible practice.

FULLY LICENSED - CALL FOR A FREE QUOTE

Contact: 07376741576

## Lushington Hill Bodyshop



**APPROVED  
ACCIDENT  
REPAIR CENTRE**



Lushington Hill Bodyshop Ltd  
Lushington Hill, Wootton Bridge  
Isle of Wight PO33 4RD

**Tel 01983 885508**

**Fax 01983 884768**

enquiries@lushingtonhillbodyshop.co.uk  
www.lushingtonhillbodyshop.co.uk



## WOOTTON TYRES

THE ISLE OF WIGHT'S PREMIER TYRE SPECIALIST

THE FAST FIT CENTRE with while you wait service

• TYRES • TYRE REPAIRS • SERVICING •  
**BRAKES • EXHAUSTS**

• **DIAGNOSTICS • WHEEL ALIGNMENT**

Looking for professional car mechanics that can help you with car repairs, servicing, exhaust replacements and more? Wootton Tyres can help you with all your vehicle servicing and repair needs for a fantastic price!

**01983 885 070**

www.woottontyresltd.co.uk

UNIT 9, WOOTTON BUSINESS PARK,  
WHITERAILS RD, WOOTTON PO33 4RH



## W WOOTTON

Islandwide Sales & Lettings

**Tel: 01983 883333**

LOCAL INDEPENDENT ESTATE AGENTS

*- With you from start to finish -*

**41 High Street, Wootton  
(next to Chemist)**

• OPEN 6 DAYS A WEEK •

www.woottonestateagents.com

sales@woottonestateagents.co.uk

## D S ELECTRICAL SERVICES

— Established 1990 —

**Free Estimates and Advice**

**For all electrical work in the  
home and office.**

**Prompt, reliable service**



**Mob: 07787 512800**

e-mail: dses@hotmail.co.uk

www.dseseiw.co.uk



**MITCHELL &  
MITCHELL**

**PROFESSIONAL ELECTRICAL  
INSTALLATIONS**

29 Lushington Hill, Wootton Bridge,  
Isle of Wight PO33 4NT

**Tel: 01983 883624**

**Mobile: 07900 928095**

**07980 935252**

E-mail: martin@mitchellmitchell.co.uk

## IVY HALL B&B and Holiday Cottage

**Mill Square,  
Wootton Bridge**

**01983 884208**



## EVERY FRIDAY **Al Anon**

(family and friends of alcoholics) meet in Wootton so if alcohol is, in any way, affecting your life, this is the safe place to talk. Your anonymity is key to our success. Further details Harry or Sally on **(01983) 638198**. All conversations are entirely confidential.

## GRANGE FARM HOLIDAYS

Red Squirrel Lodge (Gold Award)  
Self Catering Holidays (Wheelchair Friendly)  
**OPEN ALL YEAR**

- 3 Bedrooms, Sleeps 6
- Short Breaks Available
- Play Area & Accessible Garden & Grounds (including wildflower meadows)
- Dog Friendly (limited to one dog please)
- Off Road Parking

Contact: Mrs Rosemarie Horne  
Grange Farm, Staplers Road, Wootton.  
**Tel: (01983) 882147**  
Email: [info@grange-farm-holidays.co.uk](mailto:info@grange-farm-holidays.co.uk)  
Web: [www.grange-farm-holidays.co.uk](http://www.grange-farm-holidays.co.uk)

## GEOFF LEATHER

Independent Funeral Directors

24 HOUR SERVICE

— CHAPELS OF REST —

PRE-PAID FUNERAL PLANS

45 Upper St James Street,  
Newport, Isle of Wight PO30 1LG

**Tel: 529090 (24-hr)**

## A1 Garage Doors IW

Your local specialists for . . .

**Garage Doors • Roller Doors**  
**Remote control operators**  
**Security Shutters & Grilles**  
— Same day Repair Service —

• **IW 884600** •  
[www.a1specialists.co.uk](http://www.a1specialists.co.uk)

## Fancy keeping fit this year?

Then why not help deliver *The Bridge* magazine here in Wootton.

If you wish to join our band of volunteers, please contact David Bennison on 882783.

## DON'T FORGET . . .

Please tell our advertisers that you saw them in

*The Bridge*

## MEWS STEVE

Gardening services, interior and exterior gutter cleaning.  
Exterior painting including sheds, fences and garage doors.

**FREE ESTIMATES — REASONABLE RATES**

**Please call 07908 213885**

E-mail: [StevenMarkWarren938@gmail.com](mailto:StevenMarkWarren938@gmail.com)



## COMPUWIGHT

Unit 6 Bumbles Arcade  
40 High Street, Wootton

*"Pick up your phone, Not your computer"*

**COMPUTER SALES & REPAIRS**

**884888 or 07780672228**

**This space could be yours!**

Please contact:

[bridgeads@cofeparishofwoottonbridge.org.uk](mailto:bridgeads@cofeparishofwoottonbridge.org.uk)



**SERVICING**  
**MOT**  
**BRAKES**  
**SUSPENSION**  
**TYRES**  
**DIAGNOSIS**

COLLECTION & DELIVERY (IOW ONLY) AND  
PRE-BOOKED COURTESY CARS AVAILABLE!\*

CALL US TODAY ON 01983 885510 OR VISIT  
US AT HARWOODS, LUSHINGTON HILL GARAGE,  
PO334RD

## MIKE O'DELL

*Painter & Decorator*

30 years experience  
Registered independent tradesman

**07398 113635 or**  
**(01983) 409659**

## H. V. TAYLOR & SON LTD

INDEPENDENT FUNERAL DIRECTORS

45 GREEN STREET, RYDE, ISLE OF WIGHT, PO33 2QE.

TEL: 01983 562082

WWW.HVTAYLOR.CO.UK



Compassionate 24HR Service



Serving the Island since 1905 - Pre-paid funeral plans

Offering Tailor made funerals from Cremations to

Burials as well as Direct Cremations

Funeral Directors

Mr Steve Whitehurst and Mr Richard Myers



## Solutions Crystal Solutions Ltd

*Caters for all your Electrical and Digital needs*

Electrical Work

Installations, Repairs, Inspection and Design  
No Job too small

Computer & Digital

Set-up, Installations, Networks, Help, Advice

[steve@crystal-solutions-ltd.co.uk](mailto:steve@crystal-solutions-ltd.co.uk)

Mobile 077 1028 2950

Tel: (01983) 529023

## ANNA CHAPLAIN

(introducing Hilary Baldwin)

This is a person-centred ministry of spiritual care for older people of all faiths, cultures, spiritualities and contexts, and for their families and carers. The Anna Chaplain also offers advocacy for older people within church and community, they work with people living independently and within residential and nursing homes. The work of the Chaplain is defined by the wants and needs of their individual parish and is adapted accordingly. For more information please contact Hilary by:



Tel: 07769588644

Email: [annachaplain@cofeparishofwoottonbridge.org.uk](mailto:annachaplain@cofeparishofwoottonbridge.org.uk)

Website: <http://www.cofeparishofwoottonbridge.org.uk/anna-chaplain/>

## Military Whist Drives

Teams of 4 are welcome to the drives held in the Methodist hall (parking in Station car park) on the 3rd, 17th and 31st of March at 7.15, £2.50 per person. Contact Colin on 882588.

## Creature Comforts

Home Delivery Service

Tel: 01983 884270

Text: 07935 567 768

Email:

[info@creaturecomfortsiow.co.uk](mailto:info@creaturecomfortsiow.co.uk)

Complete and Frozen Foods  
Cat Dog Wild bird Squirrel etc.

Free Island Delivery



**Andrea**



## Mobile Hairdressing

Fully qualified and  
experienced hairstyling in  
your own home.  
Please phone 612395

## All Seasons Gardening Services

Regular Grass Cutting, Strimming, Hedges,  
Routine Garden maintenance, Stump grinding  
Turfing, Rotavating, Levelling,  
over-grown clearance  
Wootton 882879 (serving the area since 1999)  
[www.isleofwightgardening.com](http://www.isleofwightgardening.com)



For fun, adventure and skills  
for life, come and join  
**1st Wootton Scout Group**  
Reg. Charity 1005194

Beavers 6 – 8yrs Monday 6.15 – 7.30pm  
Cubs 8 – 10½yrs Wednesday 6.30 – 8pm  
Scouts 10½ – 14yrs Tuesday 6.30 – 8.30pm  
Explorers 14 – 18yrs Thursday 7 – 9pm

All sections open to boys and girls.  
Adults welcome to train as Leaders.

Contact Ali on 07785 934644  
for further details



**HUNT FOREST GROUP**  
Pritchetts Way,  
Rookley Industrial Estate,  
Rookley, Ventnor PO38 3LT  
**01983 721426**  
[www.huntforest.com](http://www.huntforest.com)

Specialists in walk behind and ride on mowers - demon-  
strations available upon request.

Full servicing and repairs available for all lawnmower  
brands with an Islandwide collection and delivery service.

**JOHN DEERE** @huntforestgroup

GROWING TOGETHER



## ALLAN'S

Domestic Appliances  
repaired and serviced

WASHING MACHINES,  
TUMBLE DRYERS, COOKERS, FRIDGES,  
GHD'S, VACUUM CLEANERS, etc.

DYSON and HENRY specialist

Spare parts available and  
delivered to your door!

Bags, belts, filters, hoses, motors, etc.

Call 883790

Mob: 07723 340454

E-mail: [allanswootton@gmail.com](mailto:allanswootton@gmail.com)

Over 25 years experience



## The Bridge

is Wootton's community magazine  
And it needs contributors!

Do you have a story of local interest to  
tell?

Is there a piece of local history you  
would like to share?

Do you want to publish information  
about local activities?

If you do, we'd like to hear from  
you.

We can help you put together and lay-  
out your articles;  
even if you "can't write", we can help.

If contributing to *The Bridge* is  
something that interests you, contact  
David Bennison on 882783

## GERVASE LAIGHT PLUMBER

Kitchen & Bathroom Installation  
General Plumbing Maintenance

CITY & GUILDS QUALIFIED  
— Free estimates —

RELIABLE SERVICE AT A  
REASONABLE PRICE

Tel: 01983 760544

Mobile: 07909 902004

**DOMESTIC CLEANING  
& IRONING SERVICES**  
PRACTICAL HELP & SUPPORT  
FULLY INSURED. NO AGENCY FEES  
PLEASE CALL ANGELA  
07912 432835

*This space  
could be yours!*

Please contact:

[bridgeads@cofeparishofwoottonbridge.org.uk](mailto:bridgeads@cofeparishofwoottonbridge.org.uk)

## Extracta Cleaning

For all your cleaning requirements  
Carpets & Upholstery - Sofa/Rug Cleaning  
End of Tenancy Cleaning - One off Deep Cleans  
Hoarder Clean Ups - Environmental Cleans  
Free Estimates - Fully Insured  
28 Years Experience  
Home: 01983 528720  
Mobile: 07967531576



## WOOTTON YOUTH CLUB (WYC)

WYC is a place where young people can meet with friends and join in a range of activities such as ball sports, cookery, table tennis, badminton, pool, table football, film nights, art projects, community help projects and visits to PGL Little Canada to participate in the available on-site activities. We have a café, offering various tuck items and refreshments. The young people jointly help in programming the weekly sessions and activities. Our team of trained, professional staff (including special needs support) are here to ensure the young people have fun and help them understand the world around them.

As youth workers we have time to talk through any questions and concerns.

We are located at the Old School on New Road in Wootton and session times are:

Thursdays Night 8-16 years 6.30-8.30pm

WYC welcomes young people from surrounding areas and friends from other parts of the Island also.

Please contact us for more information and do check out our WOOTTON YOUTH CENTRE Facebook page.

Contact email: [woottonbridgeyc@gmail.com](mailto:woottonbridgeyc@gmail.com) or message us on FB: wootton bridge youth club

Tom Pellet, Senior Youth Worker

## WOOTTON SCOUT HALL FOR HIRE.

Hall including modern  
kitchen, central heating, rear  
garden etc. Reasonable rates.

Contact Peter on 883385 or  
[petefiow@uwclub.net](mailto:petefiow@uwclub.net) for  
bookings.



## WOOTTON BRIDGE METHODIST CHURCH (Station Road)

*Minister: Revd David P. Plumb BA. Tel: 884694*

**Sunday Morning Service 10am**

**Evening Services as announced. Junior Church meets 10am**

### Minister's Message

I have in the past 2 weeks of writing this message received my bus pass through the post. Some may kindly say 'but you're not that old' whereas the majority would probably say 'I thought you had it years ago'.

I was not sure whether the Free Bus Pass Scheme would still be in place when I reached the ripe age of 66 as the press are often writing how expensive it is to run and the possibility of it to be taken away.

Along with my wife we made our way to Newport Library with our passport photo's to fill in the paperwork. In just over a week, the passes came in the post.

Although some may look at being given a Bus Pass is a right, I believe it is a gift to the over 66's. It is a gift, which we have to apply for. It does not automatically come through the post.

This made me think of my relationship with our Lord Jesus Christ. During Lent and at Easter we will be remembering the death and resurrection of Jesus. The reason for His death was to take our sins upon Him and in His resurrection new and everlasting life.

The gift, which God offers through Jesus, is also something we need to claim for ourselves. The offer is there but we need to do something about it.

To have assurance that our sins are forgiven and for eternal life, we need to put our faith, hope and trust in Jesus Christ.

**Jesus is king and I will extol him  
Give Him the glory, and honour His name  
He reigns on high, enthroned in the heavens  
Word of the Father, exalted for us**

**We have a hope that is steadfast and certain  
Gone through the curtain and touching the throne  
We have a Priest who is there interceding  
Pouring His grace on our lives day by day**

**We come to Him, our Priest and Apostle  
Clothed in His glory and bearing His name  
Laying our lives with gladness before Him  
Filled with His Spirit we worship the King**

**O Holy One, our hearts do adore You  
Thrilled with Your goodness we give You our praise  
Angels in light with worship surround Him  
Jesus, our Saviour, forever the same**

Blessings

*Rev David Plumb*

### Preachers for March

5th	March	Plumb
12th	March	Local arrangement, short & snappy
19th	March	Hardiman
26th	March	Wingrove

tb



**Looking for  
something different?  
Join us at**

### **Wootton Bridge Townswomen's Afternoon Guild**

**Their next meeting will be held**

**On Friday March 17<sup>th</sup> 2023**

**2pm to 4pm**

**meet like-minded people**

**have fun, laughter, walks, lunches, outings**

**Methodist Church Station Road**

**Wootton Bridge**

**01983 864104 or 01983 759350**

### **Time to get walking again! - John Harris**

With Spring on its way we start to think about getting out to walk in the beautiful English countryside again, but where to find new and interesting walks?

Walking in the Isle of Wight <https://www.walkinginengland.co.uk/wight> has loads of walks to download and print, free, it also has books of walks, details of all the walking groups in the county and much more. Whether you want to walk on your own or with a group all the information is there in one place.

John Harris (who maintains the website) said 'There is so much walking information on the web but it is difficult to find. Walking in the Isle of Wight (part of the Walking in England website) has brought it together in one place so whether you are walking from home, or away on holiday, you will be able to find a walk suitable for you'.

With walks from half a mile to twelve miles plus in length, and a note of suitability for pushchairs and wheelchairs, everyone can find a walk to enjoy. So home or away, check out the websites and get walking!

[www.walkinginengland.co.uk](http://www.walkinginengland.co.uk)  
[john@walkinginengland.co.uk](mailto:john@walkinginengland.co.uk)

tb

## PARISH COUNCIL information

### Meetings:

Meetings: usually third Tuesday in every month (except August) at 7pm in The Old School, New Road - details at HIC, on village noticeboards and on website.

### Parish Councillors:

Barry Abraham  
John Ward  
Trish Evans  
Dave Burley  
Barrie Hailstone  
Daryll Pitcher - *Chair*  
Linda Pitcher  
Lee Lemon  
Christopher Cory  
Liz Kingston, *Clerk*

All can be contacted at the HIC on 884555.

### Office opening times:-

PARISH COUNCIL  
Mon. Closed;  
Tues. 9.00am-2.00pm;  
Wed. 9.00am-2.00pm;  
Thurs. Closed;  
Fri: 9.00am-2.00pm

### BEAT OFFICER

First Tuesday in month  
10am-12 noon or messages can be left for the Police.

## WOOTTON BRIDGE PARISH COUNCIL

5 Joanne's Walk, Brannon Way,  
Wootton Bridge, Ryde, IW  
PO33 4NX

tel: 884555

email: [clerk@woottonbridge.org.uk](mailto:clerk@woottonbridge.org.uk)

website:

[www.woottonbridge.org.uk](http://www.woottonbridge.org.uk)

Full details of all facilities available at the HIC can be obtained from the Parish Clerk or on the website.



Wootton Bridge  
PARISH COUNCIL

Report from Liz Kingston, Clerk – Wootton Bridge Parish Council.  
Telephone: 884555. Email [clerk@woottonbridge.org.uk](mailto:clerk@woottonbridge.org.uk)  
Local IW Councillor for Wootton Bridge:  
Daryll Pitcher - Telephone 883840.  
Email [daryllpitcher@woottonbridge.org.uk](mailto:daryllpitcher@woottonbridge.org.uk)

*Wootton Bridge Parish Council has a Facebook page – please “like” – which displays all the latest information and you are welcome to comment on any topic.*

### Spring Tidy Up

We are looking at this taking place on Saturday 29th April 2023 from 10am – 1pm. All are welcome - you can either tidy round your own street or come to the office where we will be coordinating the Clean-up and give you an area to clean. Equipment is provided.

### Party in the Park

We are really looking forward to organising Party in the Park after not being able to hold the event for the last few years. Next year's Party in the Park will take place on Saturday 8th July 2023. If you would like a stall, then please contact the Clerk on 01983 884555 or via the Wootton Bridge Parish Council Facebook page. To make the event a success we are still in need of volunteers so if you can help in any way, please let us know.

### Doctor's Surgery

Optio have had an increase in requests and therefore there is an urgent need for more volunteer drivers or else they will have to start restricting numbers - please contact Tina on 01983 522226 if you can help.

### Post Office at Brannon Way

The Post Office in “Brannons”, Brannon Way (near the car park), is open on Wednesdays from 9.30am to 12.30pm.

### Parish Council Meetings

These are now back to face-to-face meetings at The Old School in New Road. Details of the meeting can be found on the notice board in Brannon Way, the Parish Council's website, and Facebook page. All are welcome to attend.

### Brannon Way Car Park

Just a reminder that fly-tipping around the recycling bins is illegal. It is monitored so please be aware!

*If you have any areas of concern, or want to report any incidents, please either visit the Parish Office in Brannon Way, or contact us by phone (01983 884555) or email [clerk@woottonbridge.org.uk](mailto:clerk@woottonbridge.org.uk)*



## Isle of Wight Railways

(submitted by Doreen Gazey)

**Both the beginning and ending of railways** on the Island was attended with controversy. The announcement in 1845 that a new company was to be set up with the aim of creating a railway system for the Isle of Wight caused a storm of protest, particularly from landowners whose property was likely to be affected. There was a hugely attended public meeting at Newport in June of that year and similar protests elsewhere on the island. Support for the railway promoters did grow, however, though opposition delayed matters for another 14 years, until 1859 when the Cowes and Newport Railway Company was finally set up.

The first trains on the Island ran between Cowes and Newport in 1862. The Ryde, Smallbrook Junction and Newport Railway was sanctioned in 1872, administered as a joint concern with Cowes and Newport line. There were originally seven companies involved in the promotion of the 45 route-miles of Island line but these were later merged or amalgamated into five. Ryde and Newport line was amalgamated to form the Isle of Wight Central Railway in 1887. The Wootton ticket office and waiting room were built under one of the arches of the road bridge, and the platform was on the West side of the bridge (Newport side). This was lengthened in 1912 to accommodate longer trains.

In 1907 the stationmaster's house was built alongside and level with the road. As recorded in "Once Upon a Line", Volume 4, by Andrew Britton, George Henry Edwards was Station Master at Havenstreet from 1906, and in 1910 he was transferred to Wootton Station. Seven years later he was moved to Whippingham Station. His daughter Marjorie Smith remembers the announcement at Wootton Station was always "Wootton for Woodside". In this book there is a photo of a bench on the platform and in large letters on the backrest "Wootton for Woodside". Dorothy Marey took over as Station Mistress from George Edwards for the duration of the First World War. She later married Cecil William Miller. After the War Mr. Spinks took over as Station Master, he had lost an arm in the War. There was a single siding at Wootton Station which was used by Osborne coal merchants until 1953. The Island Railways were incorporated into the Southern Railways in 1923, and in 1948 they were nationalised.

Whippingham Station was closed on 21st September 1953 on economic grounds and at the same time Wootton Station was closed. This was to reduce maintenance costs, as the clay bank opposite the platform was unstable and constantly shifting. The event was marked locally and by numerous other regular passengers, who turned the last day the trains ran into a party.

From the Wootton Parish magazine, May 1953:

"As according to present decision it will be possible to go from Wootton Station by rail it was decided to take a last fond farewell by going (on the annual Sunday School

Outing), by rail."

A passenger service continued to run through Wootton until it was closed by Dr Beeching on 21st February 1966, despite vociferous local opposition.

The Wight Locomotive Society was formed in 1966 by a group of enthusiasts in London, whose intention was simply to acquire one of the old locomotives to restore as a static exhibit. There was wide support from many quarters, so much so that after an appeal for donations on the last day of steam operation on the Shanklin line, five passenger coaches were also acquired, and attention was turned to operating the Society's engine on a length of Island line. Sadler Vectrail Ltd. planned to purchase the Cowes line, and operate a rail car service. It was intended that the Society should have joint use of the track. Soon after the Society had purchased engine No 24 Calbourne and the five carriages, without warning, the junction at Smallbrook connecting Ryde and Cowes was removed for electrification work. They were now left with the problem of the engine stranded at Ryde and its carriages at the now closed Newport Station. It was not until the 15th of August 1969, with the unexpected arrival on the Island of a low loader, that the Calbourne was transported by road to Newport.

Just prior to this members had purchased an ex London South Western Railway "Road Van" and an ex London Brighton and Southeast Railway Flat Truck which was located at Ryde, St John's, and loaded by volunteer labour together with five other wagons formerly reserved for Vectrail and transported to Newport.

By 1970 the carriages had been restored and the engine passed its boiler inspection, but all was not well with Sadler Vectrail, and in September 1970 it was announced that efforts to reopen the Cowes line were to be abandoned.

It was decided to turn attention to the Havenstreet, Wootton line, and negotiations between BR and the County Council, who had acquired the track bed, continued throughout the winter of 1970-1971. In the meantime BR had sold the remainder of the Cowes line track to scrap merchants and the Society was given just five days' notice to vacate Newport Station or have the rails cut from beneath them.

Fortunately preparation was well under way, although not complete, for the move to Havenstreet, and after a great deal of effort by volunteers the track was made ready. On Sunday 24th January 1971 four trains were successfully run from Newport to Havenstreet.

After much hard work, the station was opened to the public in the summer of 1971. Nearly 9000 people visited the railway on alternate Sunday afternoons during the first season.

The new station at Wootton was built in 1986 and the line was extended to Smallbrook junction on 20th July 1991.

## 'The Bridge'

is delivered free  
to over 1,750 homes and  
businesses in Wootton

Note to 'Bridge Deliverers'  
the March 2023 issue will be available  
to pick up from the Churches on  
**SATURDAY 25th FEBRUARY 2023**

### Sudoku - February '23 Solution

8	3	2	6	7	1	9	4	5
4	7	1	8	9	5	2	6	3
6	9	5	2	4	3	1	7	8
5	1	6	7	2	4	8	3	9
7	2	9	1	3	8	4	5	6
3	4	8	5	6	9	7	1	2
9	5	7	3	1	2	6	8	4
1	8	4	9	5	6	3	2	7
2	6	3	4	8	7	5	9	1

If you have any particular  
areas of concern, or want to  
report any incidents, please  
either visit the **Parish Office**  
in Brannon Way, or contact  
us by phone or email

Telephone:  
**01983 884555**

Email:  
[clerk@woottonbridge.org.uk](mailto:clerk@woottonbridge.org.uk)

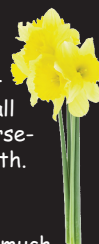
	9	6		7		8	2	3
	2		6		3			9
5			9					
6	8			3	7		9	2
2				1				5
1				9			8	
		4						7
9		2	7	5	1		3	
8				4		2	1	

## SUDOKU

Fill in the grid with digits in such  
a manner that every row, every  
column and every 3x3 box  
accommodates the digits 1-9,  
without repeating any.

### A Celebration of Mother's Day - March 19th

A mother's love for her child is  
like nothing else in the world. It  
knows no law, no pity, it dates all  
things and crushes down remorse-  
lessly all that stands in its path.  
*Agatha Christie*



Mother you gave me happiness, much  
more than words can say, I thank the Lord  
that He may bless you, every night and  
every day. Mother of mine now I am grown  
and I can walk straight all on my own,  
I'd like to give you what you gave to me,  
Mother, sweet mother, of mine.  
(Song lyrics - 'Mother of Mine')

Any article published in  
*The Bridge* is copyright and may  
not be used without the author's  
permission.

**'THE BRIDGE'**  
Copy deadline date:  
FRIDAY 10th MARCH 2023  
(12 noon) for **APRIL 2023**

The publisher does not necessarily hold  
the same views as those expressed by  
contributors and reserves the right to  
refuse or alter material.

### ST EDMUND'S and ST MARK'S CHURCH

Churchwardens: Ann Capps and Mary Peters

For Baptisms, Weddings and Funerals please contact us at:  
[stedmundsandstmarks@gmail.com](mailto:stedmundsandstmarks@gmail.com) or leave a message on 01983 301880  
(we will respond as soon as we can)

Published by St Edmund's and St Mark's Church and produced by members of  
The Bridge Magazine Group. Printed by Bishops Printers 023 9233 4900

All queries concerning  
*The Bridge* magazine  
please telephone  
David Bennison on  
882783 or the  
Churchwardens.

### E-mail Addresses

Send your advertisements for inclusion  
in 'The Bridge' to:  
[bridgeads@cofeparishofwoottonbridge.org.uk](mailto:bridgeads@cofeparishofwoottonbridge.org.uk)

Send your articles, news, diary dates and comments  
about 'The Bridge' to:  
[thebridge@cofeparishofwoottonbridge.org.uk](mailto:thebridge@cofeparishofwoottonbridge.org.uk)