

JUNE 2023

DELIVERED FREE
(by our wonderful volunteers)

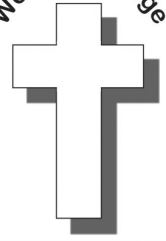
THE CHURCH PARISH MAGAZINE OF WOOTTON

The Bridge

Building Bridges in the Community

St Edmund's
& St Mark's

Wootton Bridge



100,000 Sundays



I may have told this story before, but it is worth repeating. Some years ago, the Parish of Wootton was applying for a discount card at the Cash and Carry. On the application form, there was the question "How long have you been in business?". Kath, our Rector at the time, gave the answer, "2,000 years". And to the question, "How long have you been at this address?" she replied, "900 years" (the earliest record of St. Edmund's is from 1086). There is, of course, a funny side to these answers, but they are completely true.

The longevity of religions contrasts markedly with the limited lifespan of governments, political movements, commercial businesses, and almost any other human organisation you might name. Wherever there are human beings, ordinary people have gathered to worship God in Jesus Christ. Dom Gregory Dix, an Anglican monk who made a particular study of church worship, memorably described it as "the worship of 100,000 Sundays". When you see a few people at a service in one of our village churches, that may not seem like very much. But put those people together with all the others, throughout the world, worshipping the same God on the same day as part of a two thousand year tradition, and you have a very big deal indeed.

By the time you read this, the Easter season will have come to its vibrant end at Pentecost, and we will be in the seemingly interminable sequence of Sundays after Trinity, which runs on into November with only a few Saints' Days and Festivals to offer any diversion. But, interminable or not, every service is special.

As you probably, know, the Anglican churches in Wootton have been without a parish priest since Easter 2020. For us, that has been as much an opportunity as a challenge. In our worship in particular we have been able to try new things and make use of the talents of new people. At the same time, more traditional forms of service still have their place in our calendar. We are proud to have something to offer everyone who comes to our services, and that something will always include both a warm welcome and being part of the worship of 100,000 Sundays. Do come and join us.

David Bennison

For June services, please see Page 3



Wootton Primary Celebrates in style!

I am sure every household in Wootton joined in some form of celebration to support the King's Coronation. The children at Wootton did so in style and we even managed to keep dry! We had hoped to eat our lunch outside but due to the rain stayed in but thankfully the sun came out in the afternoon!

Leading up to the event the children completed a range of activities to learn about the History of the Coronation and designed bunting which was displayed in Ryde. The children were fascinated to learn about the crown – how heavy it was and how old it was, were some of the key facts they discovered. We wanted to ensure that the children gained some really special memories and we were so very grateful to Wootton Parish Council who very kindly gave the children a beautiful bookmark each which had the Coronation details written on them. We hope you enjoyed celebrating this wonderful event as much as we did!



*Mrs Jane Wilford
Headteacher*

Our Reception children made their own castle designs and produced amazing models from their designs:

We enjoyed our very special lunch!



Each class performed a dance to a song from a different era that the King has been alive!



Sweets, sweets and more sweets

by Vivienne Loveless

My friend Susie and I had been chatting about the sweets that we used to know and love when we were growing up in the 1960's. At that time my dad was the confectionary manager for Upward & Rich, a wholesale grocers that had been in existence for over 300 years.

The perks of being a confectionary manager was that he used to get free samples to take round to the different stores that he visited; and he also brought some home to test on the family; as if the family

did not like them then they probably would not be a best seller. We never knew what would come through the door, packets of Malteser's where the packs had not sealed properly, toffees that had gone soft or new items to try out. The one that sticks in my mind is an Aztec Bar; which has long gone.

In the summer over the weekend we used to have to go into Upward & Rich to check to see that the sweets in the warehouse were not melting; if it was too hot the windows in the roof had to be opened, and then closed again at night.



So, how many of the following do you remember?

Palma Violets, Candy Shrimps, Aniseed Balls, Sherbet Dabs, Black Jacks and Fruit Salad, Sweet Cigarettes, Liquorice Laces, Gumballs and Gobstoppers, Skippy, Tooty Frooties, Nux, Spangles, Nougat, Spangles, Love Hearts, Medley, Opal Fruits (now Starburst), Marathon (now Snickers), Loot, Ceramic and Bar Six.

tb

THANK YOU!

When delivering the May issue of The Bridge, I took with me a stamped birthday card to post. When I reached the post box I didn't have the card with me and had lost it while making the deliveries on Lushington Hill. Thankfully my friend did receive her card and I would like to thank the kind person who found and posted it for me.



Patricia - a very grateful volunteer deliverer tb

Church Services in Wootton during June

(Please be aware that all services of Holy Communion are subject to a priest being available to take the service.)

The relaxation of COVID regulations means that it is no longer necessary to book for services but you will be asked to sanitize your hands.

Please wear a mask if you would feel more comfortable with it.

We are now able to offer the Brunch service to everyone!

ST EDMUND'S

| | |
|----------|---------------------|
| Sun 4th | 0800 Holy Communion |
| Sun 11th | 1830 Evensong |
| Wed 14th | 0930 Holy Communion |
| Wed 21st | 0930 Holy Communion |
| Sun 25th | 1830 Evensong |
| Wed 28th | 0930 Holy Communion |

ST MARK'S

| | |
|----------|-----------------------------------|
| Sun 4th | 9.30am Brunch Service |
| Wed 7th | 1115 Café Communion (*) |
| Sun 11th | 0930 Holy Communion + Explorers |
| Sun 18th | 0930 Morning Worship |
| Sun 25th | 9.30am Holy Communion + Explorers |

(*) If you would like to come to Café Communion, please leave us a message on the parish answerphone 301880 or email stedmundsandstmarks@gmail.com.

tb

WATCH THE WALL MY DARLING

Readers will remember our investigations into the story behind a grave in St Edmund's churchyard which we suspected may have been used to hide smuggled goods. We are still looking. Information welcomed.

I found more smuggling stories in an old guide book I was given.

The "back" or Southern part of the Island was a hotbed of smuggling. until well into the 19th century. In fact, smuggling was a community activity, involving even the Parson and the Squire. As far back as 1394, a writ of summons was issued on the Rector of Freshwater for smuggling wool. Wool was then a major source of wealth for the country, hence the Woolsack, now the seat of the Lord Chancellor in the House of Lords.

In 1836 Lt Josiah Dornford (Chief Officer of the Coastguard) was tried for colluding with smugglers though found 'not guilty'.

Smugglers were described as splendid types of men, intensely patriotic, clean in their speech and dress, with well-polished shoes.

The lure of adventure and chance of making money continued to spur the trade on. Small boats made the crossing from France, many containing false bottoms in which were hidden kegs of brandy, while tobacco was disguised as coils of tarred hemp rope. Kegs would be either sunk for later collection or run ashore at dead of night using dark lanterns and hidden in bushes or caves.

Other hiding places included farmhouse cellars, hayricks or even tombstones. Chale Bay is a

"menace to shipping", and many victims of shipwreck are buried in the churchyard, including casualties from the wreck of the Clarendon, sunk in 1836. A record of wrecks over the years from 1747-1803 counted over 100. It is quite feasible that "wreckers" were responsible for some of them.

Also in Chale churchyard were said to be two large box tombs where the lids could be raised to store smuggled liquor.

Tricks included conveying "washing to and from yachts. "has the washing arrived yet?" One story relates to how a coast guard was walking along chatting to a smuggler who could not put his supposed washing basket down in case he was found out. Another time a smuggler transported the goods in a cart, disguised as a bridal carriage.

On one occasion, excisemen thoroughly searched a house, all but the bed of a mother and her newly born child, which was of course where the goods were hidden.

Do you know any more smuggling tales? Why not tell us about them.

A selection from a poem by Rudyard Kipling:

**Five and twenty ponies,
Trotting through the dark -
Brandy for the Parson, 'Baccy for the Clerk.
Laces for a lady; letters for a spy,
Watch the wall my darling while the Gentlemen go by.**



For Your Diary ... What's On ...

KEEP ACTIVE MOVE MORE CLASSES. BINSTED COMMUNITY CENTRE ON TUESDAYS AT 11.20am AND WHIPPINGHAM VILLAGE HALL ON WEDNESDAYS AT 9.45am, 11am, 12.15pm, 1.30pm, 4pm. AND FRIDAYS AT 10.10am at ARRETON VILLAGE HALL. Go at your own pace exercise program to help improve strength, stamina and balance. CONTACT: **ANDY SAVAGE 07779 616189**

KEEP ACTIVE RELAX MORE (K.A.R.M.) CLASSES. SANDOWN BROADWAY CENTRE ON MONDAYS AT 4.15pm AND WHIPPINGHAM VILLAGE HALL ON WEDNESDAYS AT 2.45pm. A gentle movement program to calm and relax the body that is easy to learn and based on Tai Chi principles and can be done seated or standing. CONTACT: **ANDY SAVAGE 07779 616189**

BREATHE EASY ISLE OF WIGHT SUPPORT GROUP FOR ISLANDERS LIVING WITH CHRONIC LUNG CONDITIONS. MEETINGS HELD AT ARRETON VILLAGE HALL ON THE FIRST TUESDAY OF THE MONTH FROM 2PM TO 4PM. FOR FURTHER INFO GO TO [HTTPS://BREATHEEASYIOW.ORG](https://breatheeasyiow.org) OR CONTACT: **ANDY SAVAGE 07779 616189**

PARKINSONS UK ISLE OF WIGHT HAVE REGULAR WEEKLY EXERCISE CLASSES AT ARRETON VILLAGE HALL ON FRIDAYS AT 11.15am, 12.25pm and 2pm SPECIFICALLY SUITED FOR ANYONE LIVING WITH PARKINSONS. FOR FURTHER INFO CONTACT **ANDY SAVAGE 07779 616189**

Little Lions Toddler Group

This group meets at St Mark's Church 10 to 11.30am, every 2nd, 3rd & 4th Wednesday of the month at St Mark's Church. Being a new parent can be very lonely and it is always helpful to meet people who are walking the same path. So if you are a new parent, or a parent with lively toddlers on your hands, come and join us. Your children will learn to play with other children and you can talk to people who are on the same difficult journey as you. £2 per session - coffee and sympathy provided! On the first Wednesday of the month, Wootton Methodist Church runs a Messy Church session.

Elephant Club

A social group for people living with memory loss and for others just wanting an afternoon of good company.....and cake. If someone you care for has memory problems, the ELEPHANT CLUB will be meeting at St Mark's Church between 2-4pm every 2nd Thursday of the month. If you would like to exercise "the little grey cells" whilst having a laugh and eating cake, do come and join us. We would love to see you.

WOOTTON BRIDGE METHODISTS

Every Monday Morning 10.am till 12 noon. Come and enjoy coffee and chat at Wootton Methodist Church from 10am-12 noon every Monday until further notice. Everyone welcome.

Whitgar Morris, meet in the coffee lounge at St Mark's on Tuesdays 7:30pm - 9:30pm. New members, dancers or musicians welcome. For further details ring 880118.

Marks Brothers Bacon Butty Group

This group meets the second Tuesday of the month at 10.00am in St Mark's coffee lounge. The opportunity for the men of the village who would like to sort the world to rights over a coffee and a bacon butty. Please let Harry Kirby know if you will be attending. A small, voluntary, contribution towards costs always appreciated. 07814809083 or harryskirby@btinternet.com The group is very friendly and welcoming.

Coffee Morning at St. Mark's.

Tuesday 25th 9.15am - 12 noon. This is not to be missed! Free coffee and the most amazing cakes plus a warm welcome – open to everyone. Do come!

MIDSUMMER MUSIC EVENING - 7 – 9pm Saturday 24th June 2023.

St Mark's Church, Station Road, Wootton Bridge. Sing-along to your old favourite tunes with Wight Sax & Friends of St Edmund's. Refreshments & raffle, retiring collection to raise funds for St Edmund's Church Building Trust

CREEKSIDE WOMEN'S INSTITUTE (WI) - Everyone welcome at 7pm on the second Wednesday of each month (except August) at the Methodist Church, Station Road, Wootton Bridge, IW. Visitors and new members always welcome. Contact: Carole Barfoot 882466.

GREEN CLEAN

Be green while we clean!

Eco-friendly domestic cleaners, with our own products & equipment, want to clean your home or office.

Local, friendly, reliable, insured
To discuss your requirements call Julia

01983 716464
Mobile: 0788 0784 906



ROOFING AND BUILDING

Tel: Richard
(01983) 611422

Slates, Tiles and Flat Roofing - Lead Flashings, Valleys and Bays, etc. - Insurance Re-roofs and any size repairs - General Building and Contract Work

Mobile: 07971 815301

Steven CHAPPLE

(incorporating Paul Chapple Heating)

**PLUMBING and HEATING
COMPLETE BATHROOMS
and TILING**

Telephone: 612611

Mobile: 07774 892712



CIPHE

Chartered Institute of Plumbing
and Heating Engineering



Join the Choir...
**You'll Be Glad
You Did!**

**Do you enjoy
singing?**

St. Mark's Church
Choir meets on
Thursday evening
6.30-7.30pm. We sing

inspiring and uplifting hymns and anthems. No experience necessary. Our practices are for preparing the choir to sing at church services and occasional social performances.

Come along and give it a try.

Any questions please e-mail:

David: davidmcculloch1968@gmail.com

PHIL MANSFIELD Building Services

- EXTENSIONS • DRAINAGE
- BRICKWORK • BLOCK PAVING
- EXTERNAL MAINTENANCE
- PATHS AND PATIOS • DRIVES

Mobile 07952 460269

Home/evenings 01983 615724

houseproud !

'solutions by Angela'

quality cleaning & ironing services

*help and support that works for you
(further assistance readily available)*

Call 07912 432 835

The Bridge

is Wootton's community magazine and
it needs contributors!

Do you have a story to tell, a piece of local history, or information about local activities?
If you do, we'd like to hear from you.

We can help you put together, and layout, your articles; even if you "can't write", we can help.

**If contributing to *The Bridge* is something
that interests you, contact:
David Bennison on 882783**

Interested in joining our loyal
group of volunteer deliverers?

More details
from David
Bennison on
882783



Wootton Bridge

Townswomen's Guild

We are at Methodist Church Station Road
every 3rd Friday of the month 2-4pm

Please join us or call

Pauline 01983 759350

PROFESSOR CLEAN & CLEARANCE

Local House Clearance experts. Whether it's a house, rental, garage, garden, any items.

We specialise in hoarding issues and bereavement clearance. We are a family run business that provides an outstanding and professional service Islandwide. Committed to environmentally responsible practice.

FULLY LICENSED - CALL FOR A FREE QUOTE

Contact: 07376741576

Lushington Hill Bodyshop



RENAULT

**APPROVED
ACCIDENT**

REPAIR CENTRE



Lushington Hill Bodyshop Ltd
Lushington Hill, Wootton Bridge
Isle of Wight PO33 4RD

Tel 01983 885508

Fax 01983 884768

enquiries@lushingtonhillbodyshop.co.uk
www.lushingtonhillbodyshop.co.uk



WOOTTON TYRES

THE ISLE OF WIGHT'S PREMIER TYRE SPECIALIST

THE FAST FIT CENTRE with while you wait service

• **TYRES • TYRE REPAIRS • SERVICING •
BRAKES • EXHAUSTS**

• **DIAGNOSTICS • WHEEL ALIGNMENT**

Looking for professional car mechanics that can help you with car repairs, servicing, exhaust replacements and more? Wootton Tyres can help you with all your vehicle servicing and repair needs for a fantastic price!

01983 885 070

www.woottontyresltd.co.uk

UNIT 9, WOOTTON BUSINESS PARK,
WHITERAILS RD, WOOTTON PO33 4RH



W WOOTTON

Islandwide Sales & Lettings

Tel: 01983 883333

LOCAL INDEPENDENT ESTATE AGENTS

- With you from start to finish -

**41 High Street, Wootton
(next to Chemist)**

• OPEN 6 DAYS A WEEK •

www.woottonestateagents.com

sales@woottonestateagents.co.uk

D S ELECTRICAL SERVICES

— Established 1990 —

Free Estimates and Advice

**For all electrical work in the
home and office.**

Prompt, reliable service



Mob: 07787 512800

e-mail: dses@hotmail.co.uk

www.dsesiw.co.uk

MIDSUMMER MUSIC EVENING

7 – 9 PM SATURDAY 24TH JUNE 2023

ST MARKS CHURCH

STATION ROAD, WOOTTON BRIDGE
SING-ALONG TO YOUR OLD FAVOURITE
TUNES WITH WIGHT SAX & FRIENDS
OF ST EDMUNDS

REFRESHMENTS & RAFFLE

RETIRING COLLECTION

TO RAISE FUNDS FOR ST EDMUNDS
CHURCH BUILDING TRUST

IVY HALL B&B and Holiday Cottage

**Mill Square,
Wootton Bridge**

01983 884208

EVERY FRIDAY **Al Anon**

(family and friends of alcoholics) meet in Wootton so if alcohol is, in any way, affecting your life, this is the safe place to talk. Your anonymity is key to our success. Further details Harry or Sally on (01983) 638198). All conversations are entirely confidential.

GRANGE FARM HOLIDAYS

Red Squirrel Lodge (Gold Award)
Self Catering Holidays (Wheelchair Friendly)
OPEN ALL YEAR

- 3 Bedrooms, Sleeps 6
- Short Breaks Available
- Play Area & Accessible Garden & Grounds (including wildflower meadows)
- Dog Friendly (limited to one dog please)
- Off Road Parking

Contact: Mrs Rosemarie Horne
Grange Farm, Staplers Road, Wootton.
Tel: (01983) 882147
Email: info@grange-farm-holidays.co.uk
Web: www.grange-farm-holidays.co.uk

GEOFF LEATHER

Independent Funeral Directors

24 HOUR SERVICE

— CHAPELS OF REST —

PRE-PAID FUNERAL PLANS

45 Upper St James Street,
Newport, Isle of Wight PO30 1LG

Tel: 529090 (24-hr)

A1 Garage Doors IW

Your local specialists for . . .

Garage Doors • Roller Doors
Remote control operators
Security Shutters & Grilles
— Same day Repair Service —

• **IW 884600** •
www.a1specialists.co.uk

Fancy keeping fit this year?

Then why not help deliver *The Bridge* magazine here in Wootton.

If you wish to join our band of volunteers, please contact David Bennison on 882783.

DON'T FORGET . . .

Please tell our advertisers that you saw them in

The Bridge

MEWS STEVE

Gardening services, interior and exterior gutter cleaning.
Exterior painting including sheds, fences and garage doors.

FREE ESTIMATES — REASONABLE RATES

Please call 07908 213885

E-mail: StevenMarkWarren938@gmail.com



COMPUWIGHT

Unit 6 Bumbles Arcade
40 High Street, Wootton

"Pick up your phone, Not your computer"

COMPUTER SALES & REPAIRS

884888 or 07780672228

This space could be yours!

Please contact:

bridgeads@cofeparishofwoottonbridge.org.uk



SERVICING
MOT
BRAKES
SUSPENSION
TYRES
DIAGNOSIS

COLLECTION & DELIVERY (IOW ONLY) AND
PRE-BOOKED COURTESY CARS AVAILABLE!*

CALL US TODAY ON 01983 885510 OR VISIT
US AT HARWOODS, LUSHINGTON HILL GARAGE,
PO334RD

MIKE O'DELL

Painter & Decorator

30 years experience
Registered independent tradesman

07398 113635 or
(01983) 409659

H. V. TAYLOR & SON LTD

INDEPENDENT FUNERAL DIRECTORS

45 GREEN STREET, RYDE, ISLE OF WIGHT, PO33 2QE.

TEL: 01983 562082

WWW.HVTAYLOR.CO.UK



Compassionate 24HR Service



Serving the Island since 1905 - Pre-paid funeral plans

Offering Tailor made funerals from Cremations to

Burials as well as Direct Cremations

Funeral Directors

Mr Steve Whitehurst and Mr Richard Myers



Solutions Crystal Solutions Ltd

Caters for all your Electrical and Digital needs

Electrical Work

Installations, Repairs, Inspection and Design
No Job too small

Computer & Digital

Set-up, Installations, Networks, Help, Advice
steve@crystal-solutions-ltd.co.uk

Mobile 077 1028 2950

Tel: (01983) 529023

ANNA CHAPLAIN (Hilary Baldwin)

This is a person-centred ministry of spiritual care for older people of all faiths, cultures, spiritualities and contexts, and for their families and carers. The Anna Chaplain also offers advocacy for older people within church and community, they work with people living independently and within residential and nursing homes. The work of the Chaplain is defined by the wants and needs of their individual parish and is adapted accordingly. For more information please contact Hilary by:



Tel: 07769588644

Email: annachaplain@cofeparishofwoottonbridge.org.uk

Website: <http://www.cofeparishofwoottonbridge.org.uk/anna-chaplain/>

Military Whist Drives

Teams of 4 are welcome to the drives held in the Methodist hall (parking in Station car park) on the 9th and 23th of June at 7.15pm.
£2.50 per person. Contact Colin on 882588.

Creature Comforts

Home Delivery Service

Tel: 01983 884270

Text: 07935 567 768

Email:

info@creaturecomfortsiow.co.uk

Complete and Frozen Foods
Cat Dog Wild bird Squirrel etc.

Free Island Delivery



Andrea



Mobile Hairdressing

Fully qualified and
experienced hairstyling in
your own home.
Please phone 612395

All Seasons Gardening Services

Regular Grass Cutting, Strimming, Hedges,
Routine Garden maintenance, Stump grinding
Turfing, Rotavating, Levelling,
over-grown clearance

Wootton 882879 (serving the area since 1999)
www.isleofwightgardening.com



ALLAN'S

**Domestic Appliances
repaired and serviced**

WASHING MACHINES,
TUMBLE DRYERS, COOKERS, FRIDGES,
GHD'S, VACUUM CLEANERS, etc.

DYSON and HENRY specialist

**Spare parts available and
delivered to your door!**

Bags, belts, filters, hoses, motors, etc.

Call 883790

Mob: 07723 340454

E-mail: allanswootton@gmail.com

Over 25 years experience



The Bridge

is Wootton's community magazine
And it needs contributors!

Do you have a story of local interest to
tell?

Is there a piece of local history you
would like to share?

Do you want to publish information
about local activities?

**If you do, we'd like to hear from
you.**

We can help you put together and lay-
out your articles;
even if you "can't write", we can help.

**If contributing to The Bridge is
something that interests you, contact
David Bennison on 882783**



For fun, adventure and skills for life, come and join 1st Wootton Scout Group

Reg. Charity 1005194

Beavers 6 – 8yrs Monday 6.15 – 7.30pm
Cubs 8 – 10½yrs Wednesday 6.30 – 8pm
Scouts 10½ – 14yrs Tuesday 6.30 – 8.30pm
Explorers 14 – 18yrs Thursday 7 – 9pm

All sections open to boys and girls.
Adults welcome to train as Leaders.

**Contact Ali on 07785 934644
for further details**



**HUNT
FOREST
GROUP**
Pritchetts Way,
Rookley Industrial Estate,
Rookley, Ventnor PO38 3LT
01983 721426
www.huntforest.com

Specialists in walk behind and ride on mowers - demon-
strations available upon request.

Full servicing and repairs available for all lawnmower
brands with an Islandwide collection and delivery service.

JOHN DEERE @huntforestgroup

GROWING TOGETHER

GERVASE LAIGHT PLUMBER

Kitchen & Bathroom Installation
General Plumbing Maintenance

CITY & GUILDS QUALIFIED
— Free estimates —

**RELIABLE SERVICE AT A
REASONABLE PRICE**

Tel: 01983 760544

Mobile: 07909 902004

DOMESTIC CLEANING & IRONING SERVICES

PRACTICAL HELP & SUPPORT
FULLY INSURED. NO AGENCY FEES
**PLEASE CALL ANGELA
07912 432835**

*This space
could be yours!*

Please contact:

bridgeads@cofeparishofwoottonbridge.org.uk

EXTRACTA CLEANING

For all your cleaning requirements
Carpets & Upholstery - Sofa/Rug Cleaning
End of Tenancy Cleanings - One off Deep Cleans
Hoarder Clean Ups - Environmental Cleans
Free Estimates - Fully Insured
28 Years Experience



**Home: 01983 528720
Mobile: 07967531576**



WOOTTON YOUTH CLUB (WYC)

WYC is a place where young people can meet with friends and join in a range of activities such as ball sports, cookery, table tennis, badminton, pool, table football, film nights, art projects, community help projects and visits to PGL Little Canada to participate in the available on-site activities. We have a café, offering various tuck items and refreshments. The young people jointly help in programming the weekly sessions and activities. Our team of trained, professional staff (including special needs support) are here to ensure the young people have fun and help them understand the world around them.

As youth workers we have time to talk through any questions and concerns.

We are located at the Old School on New Road in Wootton and session times are:

Thursdays Night 8-16 years 6.30-8.30pm

WYC welcomes young people from surrounding areas and friends from other parts of the Island also.

Please contact us for more information and do check out our WOOTTON YOUTH CENTRE Facebook page.

Contact email: woottonbridgeyc@gmail.com or message us on FB: wootton bridge youth club

Tom Pellet, Senior Youth Worker

WOOTTON SCOUT HALL FOR HIRE.

Hall including modern
kitchen, central heating, rear
garden etc. Reasonable rates.

Contact Peter on 883385 or
petefiow@uwclub.net for
bookings.

WOOTTON BRIDGE METHODIST CHURCH (Station Road)

Minister: **Revd David P. Plumb BA. Tel: 884694**

Sunday Morning Service 10am

Evening Services as announced

Minister's Message

Communication with God

I am sure many of you watched the Coronation and the Concert that followed. I personally believe that there is no other place that does 'Pomp and Ceremony' as well as we do. There will be many individual memories of the weekend. For me the highlight was not to do with the lavish coaches, the ceremony or even the fashion of the day. It was actually one part of the concert that grabbed my attention more than any other. This was when 1000 drones were making images in the sky starting with a whale. I tried to imagine the work that had to go into just a few minutes of a display. I would expect that each drone was being controlled by a computer program which sent out signals from a distance away. We cannot physically see the signals which are sent.

It made me think of how we communicate with God and how he communicates with us. In many ways God is often seen as been distant whilst at the same time he is everywhere. When we offer

up our prayers and praises we cannot see them physically but they always reach their destination, which is God. Visa versa when he communicates with us we can be comforted and blessed and his love will be revealed to us.

O Lord hear my prayer
O Lord hear my prayer
When I call, answer me
O Lord hear my prayer
O Lord hear my prayer
Come and listen to me.....

Blessings

Rev David Plumb

Preachers for June

| | | | |
|------|------|----------|--------------------------------|
| 4th | June | Trinity | Felton |
| 11th | June | Ordinary | Whittingstall - Short & Snappy |
| 18th | June | Ordinary | Local arrangement, |
| 25th | June | Ordinary | Yates |



**Summer days
Enjoy them
with**

**Wootton Bridge Townswomen's
Afternoon Guild**

Their next meeting will be held

On Friday JUNE 16th

2pm to 4pm

This month's subject

Preserving food during WW2

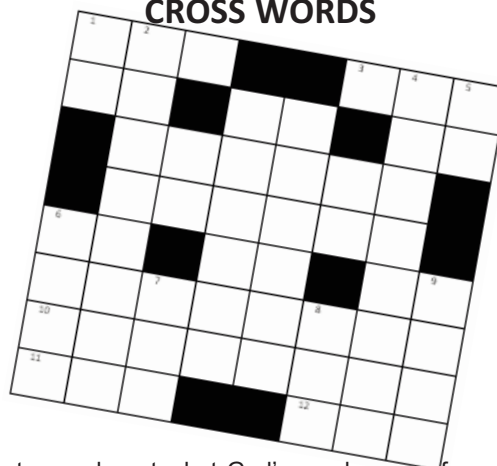
Plus a lively monthly lunch

Methodist Church Station Road

Wootton Bridge

Pauline 759350 or Janet 864104

CROSS WORDS



A group that tries to puzzle out what God's word means for us without any cross words.

We meet on Thursday mornings (11am to noon) in St Mark's Coffee Lounge – come and help us find the cross in the puzzle of life.

For more information contact stedmundsandstmarks@gmail.com or leave a message on 301880.

PARISH COUNCIL information

Meetings:

Meetings: usually third Tuesday in every month (except August) at 7pm in The Old School, New Road - details at HIC, on village noticeboards and on website.

Parish Councillors:

Barry Abraham
John Ward
Trish Evans
Dave Burley
Barrie Hailstone, *Chair*
Linda Pitcher, *V.Chair*
Lee Lemon
Christopher Cory
Ian Yeo
Liz Kingston, *Clerk*
Lorna Morey, *Assistant Clerk*

All can be contacted at the HIC on 884555.

Office opening times:-

PARISH COUNCIL
Mon. Closed;
Tues. 9.00am-2.00pm;
Wed. 9.00am-2.00pm;
Thurs. Closed;
Fri: 9.00am-2.00pm

BEAT OFFICER

First Tuesday in month
10am-12 noon or messages can be left for the Police.

WOOTTON BRIDGE PARISH COUNCIL

5 Joanne's Walk, Brannon Way,
Wootton Bridge, Ryde, IW
PO33 4NX

tel: 884555
email: clerk@woottonbridge.org.uk
website:
www.woottonbridge.org.uk

Full details of all facilities available at the HIC can be obtained from the Parish Clerk or on the website.



Wootton Bridge
PARISH COUNCIL

Report from Liz Kingston, Clerk – Wootton Bridge Parish Council.
Telephone: 884555. Email clerk@woottonbridge.org.uk
Local IW Councillor for Wootton Bridge:
Barrie Hailstone
Email TBA

Wootton Bridge Parish Council has a Facebook page – please “like” – which displays all the latest information and you are welcome to comment on any topic.

Spring Tidy Up

A big thank you to Councillor Evans and residents June, Sylvie, Brenda, Al, Brody and Enid for giving up their time in April to pick up litter around the village. The Beavers also very kindly picked up litter at the Recreation Ground. It really makes such a difference if everyone can help to tidy up their street. We aim to have more volunteers next year and hope to offer refreshments afterwards.

Coronation of King Charles

We hope you all managed to enjoy the Coronation celebration on the bank holiday weekend despite the rain! The Parish Council donated commemorative bookmarks to all the children at Wootton Community Primary School and £250 of new books to the school library.

Party in the Park

Party in the Park is going to be held at Wootton Recreation ground on Saturday 8th July. This is our annual afternoon fete from 12-5pm and evening music picnic from 6-10pm. This year there will be various charity and craft stalls, classic cars, a dog agility show, local businesses, raffle, falconry display, bouncy castle, ice cream van, hot and cold refreshments and music throughout the day. Hopefully the weather will be kind to us this year so that you can enjoy a picnic under the stars. If you would like a stall or are a business and would like to provide a raffle prize then please contact the Clerk on 01983 884555, email on assistantclerk@woottonbridge.org.uk, via the Wootton Bridge Parish Council Facebook page or pop into our office at Brannon Way.

Doctor's Surgery

There are currently no updates on the relocation of the Doctor's surgery. Optio have had an increase in requests and therefore there is an urgent need for more volunteer drivers or else they will have to start restricting numbers - please contact Tina on 01983 522226 if you can help.

Environmental Officer

The Parish Council has engaged the services of an Environmental Officer to tackle some of the low level and anti-social behaviours that can unfortunately blight our community. The EO will be working at random times and days each week and has initially been asked to concentrate on fly-tipping, littering and dog fouling.

Post Office at Brannon Way

The Post Office in “Brannons”, Brannon Way (near the car park), is open on Wednesdays from 9.30am to 12.30pm.

Annual Meeting of the Parish Council


At our annual meeting on 16th May, Councillor Barrie Hailstone was elected as the new Chair of Wootton Bridge Parish Council. Councillor Linda Pitcher was elected as the new Vice Chair.

Council meetings are held at the Old School in New Road every 3rd Tuesday of the month – details of these are available on our website as well as on our noticeboard outside our office.

Brannon Way Car Park

Just a reminder that fly-tipping around the recycling bins is illegal. It is monitored so please be aware!

If you have any areas of concern, or want to report any incidents, please either visit the Parish Office in Brannon Way, or contact us by phone (01983 884555) or email clerk@woottonbridge.org.uk

Liz Kingston – Clerk 

From the Parish Archive - The Memoirs of R Williams - Part 3 (final)

(continued from the April edition)

The leaving age from school was supposed to be 14 years, but many children left between 13 and 14. On leaving school for good it was necessary to start earning money, all of which was handed to one's parents, who returned a small part to be spent or saved as one thought best.

I left at 13 1/2 years to work as an apprentice bricklayer. The rate of pay was 2/5d. (12p.) for the first year, 5/- (25p.) for the second, and 7/6d. (37p) to the third year.

The first liner I can remember seeing was the Titanic, which left Southampton on its ill fated, maiden voyage on the 10th April, 1912. There was also the age of the paddle steamer, "but all such wonderful sights are a thing of the past".

The house in which I was born had a fine view across Fishbourne, the Solent and Portsmouth beyond. Two short moves across the road and the view remains

the same today.

Many of the things that were common in my early days would seem strange today, for instance, there were no hot water bottles made of rubber for warming the bed in the winter. A

stoneware bottle with a screwed stopper could be used, this held about 5 to 4 pints of hot

water. Many villagers, including my family would simply heat a house-brick by the fire or oven, wrap it in a piece of blanket and when placed in the bed, gave very good results.

Toilet paper in flat packs could be purchased for use in the loo, but few working-class people could afford such luxuries. Newsprint torn as required from a heap nearby solved the problem. A posher way was to use "Dirt Track Tickets". Paper cut about 8" square threaded on string and hung on the wall. Home medical treatment was crude by today's standard; each weekend we were given a good "clear-out" to keep us in good health. The following methods which varied according to season would be given:- a dose of Beechams Pills, Liquid Paraffin, Brimstone Treacle, Epsom Salts or Caster Oil etc., would keep us in running order, it sure did.

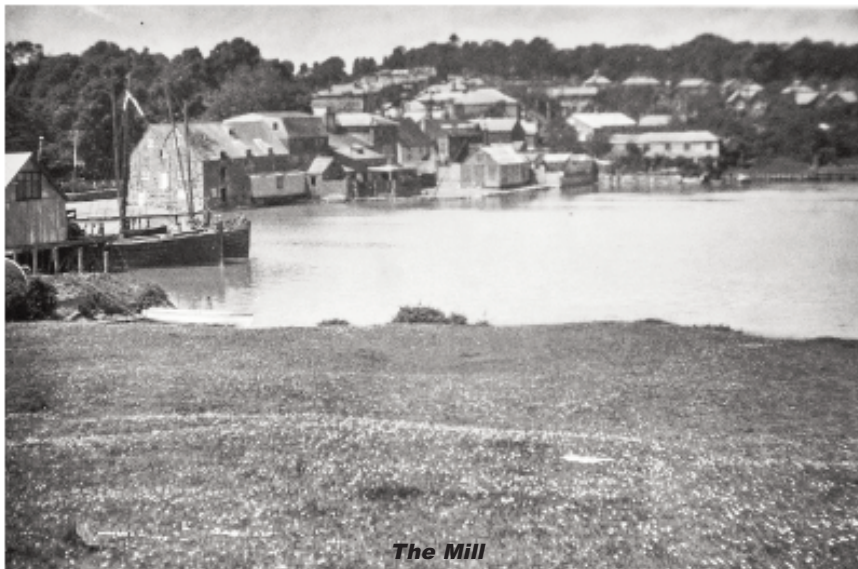
If one had a sore throat, Mother would make a

paper cone and cut the point off to leave a hole about 1" diameter, powdered Sulphur was put in the cone, the small end in the patient's mouth and Mother, taking a deep breath would blow the lot to all the trouble spots. Teeth were cleaned by rubbing the brush on the bottom of Sooty (the kettle) and then in salt.

In 1921 I started to work with my Father in the building trade. As we were away all day, Mother would pack us sandwiches together with a bottle of cold tea. (Thermos flasks were not in general use at that time.)

I was fascinated as to how many of the older workers brought their meal which could be best described, as it was packed at about 6 00am while the husband was having his breakfast, the wife would pack enough for "Nammit" (10.00am break) and midday meal.

She would lay a white linen napkin on the table, place the bottom part of a cottage loaf on it, she would then scoop out a hollow in the soft part in which she would place a large lump of local farm butter, on top of this a large thick slice of pork, bacon or beef, which again, was topped with a layer of cheese,



the whole would be wrapped in the napkin and fastened with a big pin.

Another napkin, red in colour with white spots was put on the table and the first meal put on it. The diagonal opposite corners were then crossed and then knotted in the centre to form a handle for carrying. When mealtime arrived, the worker would sit down and spread out the napkins across the knees and with a pocket knife, cut portions as required, a raw onion was often included. The modern equivalent is just tasteless rubbish by comparison.

Cold tea (no milk) was the usual drink, this was in a blue enamelled metal can of oval shape, tapered at the top to receive a normal cork stopper, which was chained to the handle to prevent loss.

A bygone era, never to be repeated.

'The Bridge'

is delivered **free**
to over 1,750 homes and
businesses in Wootton

Note to 'Bridge Deliverers'
the July 2023 issue will be available
to pick up from the Churches on
SATURDAY 1st JULY 2023

Wordsearch - May '23 Solution CORONATION

| | | | | | | | | | | | | | | |
|------------|---|---|---|---|-------------|---|---|---|---|-------------|---|---|---|---|
| G | F | G | N | O | I | T | A | N | O | R | O | C | M | O |
| N | K | B | N | O | I | T | A | R | B | E | L | E | C | I |
| I | E | N | O | R | H | T | Y | N | O | M | E | R | E | C |
| K | N | B | A | N | K | H | O | L | I | D | A | Y | J | P |
| S | O | V | E | R | E | I | G | N | Q | U | E | E | N | I |
| M | A | N | T | H | E | M | I | Q | U | H | V | M | J | E |
| M | U | S | I | C | B | M | O | N | A | R | C | H | Z | W |
| J | R | G | N | I | R | E | E | H | C | C | A | B | K | O |
| E | B | O | R | N | O | I | S | S | E | C | O | R | P | R |
| P | A | L | A | C | E | C | H | A | R | L | E | S | P | C |
| CROWN | | | | | KING | | | | | THRONE | | | | |
| CORONATION | | | | | QUEEN | | | | | CELEBRATION | | | | |
| MUSIC | | | | | ANTHEM | | | | | ROBE | | | | |
| CHEERING | | | | | BANKHOLIDAY | | | | | PROCESSION | | | | |
| CHARLES | | | | | PALACE | | | | | CEREMONY | | | | |
| MONARCH | | | | | SOVEREIGN | | | | | | | | | |

If you have any particular
areas of concern, or want to
report any incidents, please
either visit the **Parish Office**
in **Brannon Way**, or contact
us by phone or email

Telephone:
01983 884555

Email:
clerk@woottonbridge.org.uk

King Charles III WORDSEARCH

| | | | | | | | | | | | | | | |
|---|---|---|---|---|---|---|---|---|---|---|---|---|---|---|
| V | O | L | O | P | R | U | H | T | R | A | P | O | R | S |
| A | H | N | F | H | G | R | U | B | N | I | D | E | O | E |
| I | C | O | R | N | W | A | L | L | G | I | Y | A | S | L |
| R | S | H | W | I | L | L | I | A | M | N | P | F | D | A |
| F | C | V | T | E | K | Z | L | L | E | Z | J | K | N | W |
| O | O | C | E | E | I | T | D | T | P | H | I | L | I | P |
| R | T | A | N | I | B | V | T | M | T | S | Q | L | W | J |
| C | L | S | H | T | L | A | E | W | N | O | M | M | O | C |
| E | A | T | O | N | B | C | Z | X | R | Z | Q | T | E | S |
| H | N | L | K | T | G | O | S | I | J | G | W | D | P | I |
| C | D | E | N | J | S | C | O | T | L | A | N | D | I | T |
| N | A | U | G | Z | A | A | L | A | G | E | O | R | G | E |
| N | O | U | O | S | U | W | B | J | I | N | G | N | I | K |
| M | K | J | J | Y | R | R | A | H | N | W | O | K | W | Z |
| N | Z | T | N | E | M | N | O | R | I | V | N | E | F | F |

WINDSOR
POLO
HARRY
COMMONWEALTH
CORNWALL
AIRFORCE
SCOTLAND

WILLIAM
PHILIP
ENVIRONMENT
ARTHUR
EDINBURGH
CASTLE
MOUNTBATTEN

SCOTLAND
KING
ELIZABETH
GEORGE
UK
WALES

Any article published in
The Bridge is copyright and may
not be used without the author's
permission.

'THE BRIDGE'
Copy deadline date:
FRIDAY 16th JUNE 2023
(12 noon) for **JULY 2023**

The publisher does not necessarily hold
the same views as those expressed by
contributors and reserves the right to
refuse or alter material.

ST EDMUND'S and ST MARK'S CHURCH

Churchwardens: Ann Capps and Mary Peters

For Baptisms, Weddings and Funerals please contact us at:
stedmundsandstmarks@gmail.com or leave a message on **01983 301880**
(we will respond as soon as we can)

Published by St Edmund's and St Mark's Church and produced by members of
The Bridge Magazine Group. Printed by Bishops Printers 023 9233 4900

All queries concerning
The Bridge magazine
please telephone
David Bennison on
882783 or the
Churchwardens.

E-mail Addresses

Send your advertisements for inclusion
in '*The Bridge*' to:
bridgeads@cofeparishofwoottonbridge.org.uk

Send your articles, news, diary dates and comments
about '*The Bridge*' to:
thebridge@cofeparishofwoottonbridge.org.uk

D-DAY