

SEPTEMBER 2023

DELIVERED FREE
(by our wonderful volunteers)

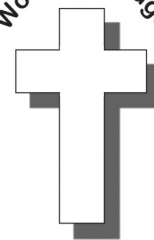
THE CHURCH PARISH MAGAZINE OF WOOTTON

The Bridge

Building Bridges in the Community

St Edmund's
& St Mark's

Wootton Bridge



Jiggery-pokery is as old as the calendar



It's September already. *The Bridge* returns from its summer break with 2023 already two thirds gone, and the days are getting shorter. Blimey, that was quick.

September, like all the months from now until December, has the wrong name. It is the ninth month, but it is called the seventh. How come? It's all the fault of those Romans. Originally, they had just ten named months, running from March to December, in their year. The dead time which became January and February had no month names at all. Eventually, they added in the two initial months, but they allowed February to vary a bit in length, so that they could make adjustments to keep the calendar year in line with the seasons. (That is why it is February that varies in a leap year.) The numbered months kept their original numbers, even though they

were now wrong.

It is amazing how these things persist. Our modern world still has a set of months named after gods that everyone has forgotten, a couple of emperors who have been dead for more than 2,000 years and four wrong numbers. You just couldn't make it up.

Of course, the Romans were not the only people to turn the calendar into a rich source of conflict and confusion. In Christianity, the Eastern Orthodox and Western churches cannot agree on what calendar to use or how to fix the date of Easter. The Islamic year has only 354 or 355 days. And Jewish sects at the time of Jesus used the fact that they had different calendars as an opportunity to go and interrupt another sect's religious festivals.

In Rome, the person responsible for adjusting the calendar was the Pontifex Maximus, or Chief Priest (sort of). This became a political office - think of Donald Trump as the Pope and you'll get the idea. Politicians being politicians, if they could mess with the calendar to their advantage, that is what they did. Julius Caesar lengthened the year 46 BC to 446 days, thereby adding 81 days to his term of office as Consul. One shudders to think about what some of today's politicians would do if they had similar powers. In any event, if you thought that Einstein discovered the variability of time, think again.

After all that it comes as something of a relief to remind you that, notwithstanding any peculiarities of the calendar, St Edmund's Open Weekend is still on Saturday and Sunday 9th and 10th September, and that we'd love to see you there.

David Bennison

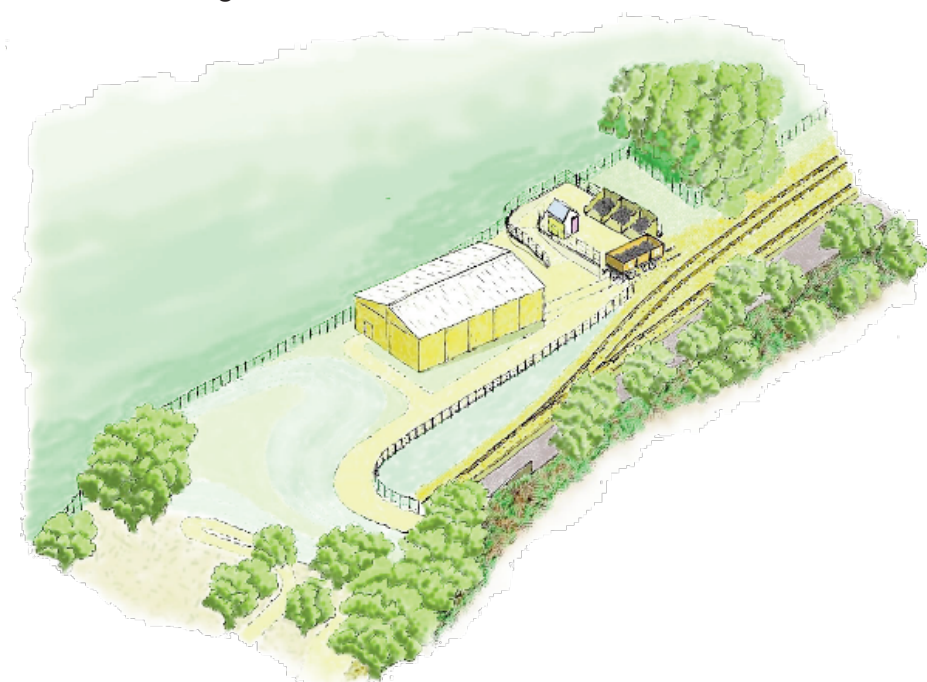
St Edmund's Open Weekend, Sept 9th & 10th, 10.30am to 6pm. See Page 9.

ISLE OF WIGHT STEAM RAILWAY

WOOTTON GOODS SHED PROJECT

The Isle of Wight Steam Railway has long had a presence in Wootton, and in recent years has been working hard to improve its station and facilities in the village. The next phase of this improvement is the development of a new goods shed and small coal yard at the Wootton end of the line. This is a project designed to keep the 1900s feel of Wootton Station, and the shed and additional signalling required will be built using appropriate period materials and detailing.

The shed is loosely based on a similar building, which was present at the long-since demolished station at Ventnor, and will be timber-clad in a style familiar to anyone who has memories of much of the Island's original rail network.



The shed and signalling will enable the railway to better display some of their goods wagons and explain to visitors the importance the railways had in the transport of produce and materials across the island, as well as being part of an overall improvement to the facilities at Wootton Station.

YOUR CHANCE TO GET INVOLVED

The Isle of Wight Steam Railway is largely staffed by a fantastic team of volunteers who keep the trains running and fulfil a huge range of roles across the railway. There are always opportunities for members of the public to donate their time and find out first-hand the benefits volunteering can bring to their social life, health, and general wellbeing. The Wootton Goods Shed Project is no exception to this aspect of the Railway's existence, and they are currently looking for volunteers who want to get involved with the project in a range of roles.

The Steam Railway's volunteers feel a real sense of pride in keeping a slice of the Island's heritage alive, and you can share in that satisfaction by getting involved with the Goods Shed project – imagine being able to tell your children or grandchildren you helped to build a part of the railway when you next take a ride on the steam train!

If you'd like to find out more about the goods shed project or any aspect of volunteering at the railway, please take a look at iwsteamrailway.co.uk/volunteer or email volunteer@iwsteamrailway.co.uk

Notice concerning a grave in St Edmund's Churchyard

DIANA ASTRID GOLD (previously of 5 Firestone Glade Wootton) and **RONALD DAVID GOLD** (previously of Berrystead Nursing Home, Syston, Leics.)

If you are a relative of the above would you please contact the churchwardens (contact details on Page 12). Their headstone has had to be laid flat because it had worked loose, and we need to know whether you wish to leave it like that or have it reset in place. Thank you.

ABOUT WOOTTON CREEK - by Doreen Gazey

The silver sheet of water on the South side of the Bridge is the first island beauty spot that many visitors, arriving from the nearby car ferry, will see.

Until 1963 it was the Mill Pond for a Tide Mill, since sadly demolished though the old miller's house remains as the Sloop Inn.

The whole area, including Wootton Creek which is a Site of Special Scientific Interest, is rich in wild life.

For 100s of years the Mill ground corn while vessels of many types and varied tonnage, berthed at nearby Wootton Quay, including the earliest ferries. John Wesley landed here when he visited the Isle of Wight.

Your way will take you past some very ancient woodland, some of which is owned by a nature conservation organisation.

Depending on the time of year you may see wild daffodils, and carpets of primroses. Later there will be lakes of bluebells, wild orchids, wild roses, honeysuckle. If at any time on your walk your feet start to ache it is a useful distraction to count the number of flowering plants. The total may well surprise you.

Birds are plentiful here. Several kinds of owls hunt over the fields, as do birds of prey such as buzzards and kestrels. Herons nest in the woods next to the Creek.

There has been a heronry here for up to 100 years. You will probably hear or see, swallows, cuckoos, even larks as well as many other kinds of birds. The Isle of Wight is rich in wildlife of all kinds, which may be rare elsewhere. And on the Eastern boundary of the village, like a silver thread is Wootton Creek. It has been known as a safe harbourage for at least 2000 years and was once very busy. Next to the Quay the now vanished Tide Mill stood for over 900 years.

Though now unsuitable for larger vessels the Creek is a Mecca for yachtsmen and featured in the yachting book, *Creeks and Harbours of the Solent* by writer Adlard Coles.

The waters of the Creek are under the control of the Dockyard Port of Portsmouth. In the Napoleonic period, the whole area, including the forts and dockyard, were under the continual threat of invasion and in 1865 Wootton Creek was included in the area controlled by the Monarch's Harbour Master. Also, in the Second World War, invasion barges were moored in the Creek ready for the 'D' Day landings.

tb



Church Services in Wootton during September

(Please be aware that all services of Holy Communion are subject to a priest being available to take the service.)

The relaxation of COVID regulations means that it is no longer necessary to book for services but you will be asked to sanitize your hands.

Please wear a mask if you would feel more comfortable with it.

We are now able to offer the Brunch service to everyone!

ST EDMUND'S

SEPTEMBER

Sun 3rd	0800 Holy Communion
Sun 10th	No Evensong (St Edmund's Open Weekend)
Wed 13th	0930 Holy Communion
Wed 20th	0930 Holy Communion
Sun 24th	1830 Evensong
Wed 27th	0930 Holy Communion

ST MARK'S

SEPTEMBER

Sun 3rd	0930 Brunch Service
Wed 6th	1115 Café Communion (*)
Sun 10th	0930 Holy Communion
Sun 17th	0930 Morning Worship followed by the Big Mac Talk
Sun 24th	0930 Holy Communion

(*) If you would like to come to Café Communion, please leave us a message on the parish answerphone 301880 or email: stedmundsandstmarks@gmail.com.

tb

Harwood's Garage celebrates its 90th anniversary

by Matthew Harwood (Director and Son of Stephen Harwood)

2023 sees Harwood's Garage celebrates its 90th year in business. Established in 1933 by Percy Harwood the business remains family owned and continues to grow.

"Percy was an incredibly astute man" says Percy's grandson Matt, "He realised the site was perfect for the garage as it sits 3.5 miles from Ryde, East Cowes and Newport, offering a convenience for three big communities as well as Wootton Bridge itself."

The original garage was located on the site of where we now find Bayliss and Booth. Percy and his wife Dot lived in the flat above with their two sons Stephen and Ivan. As a family, they worked relentlessly to make the business work. As well as fuel and repairs, they also ran a fleet of taxis including a Buick.

At the outbreak of the Second World War, the garage was taken over by the army for the maintenance of vehicles and Percy worked as an ambulance driver of a converted single decker bus. It was fitted out as a mobile hospital, carried all the necessary equipment, and was stationed in the garage.

Post war Harwood's had started to sell Fords and later franchises for Rover, Singer and Renault. Eventually the garage became a sole Renault dealer in 1959 and is now the oldest Renault franchise in England.

The business continued to grow and in 1974 the new site, where the garage resides today, was built with a state of the art workshop and showroom. By the 1970's Stephen had taken over from Percy in the day-to-day running of the operation. Stephen, with a brilliant team around him, expanded the business.

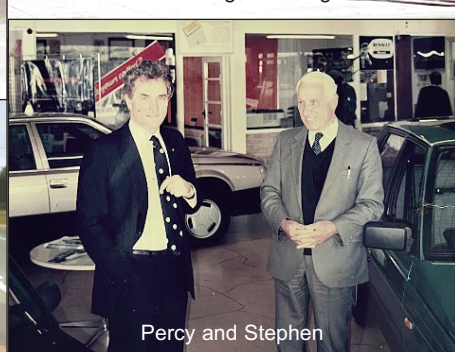
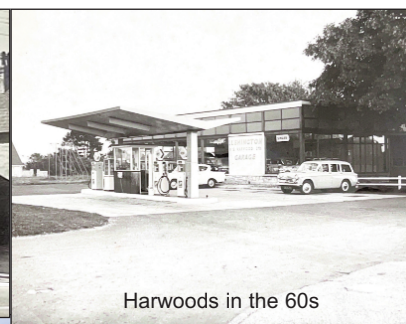
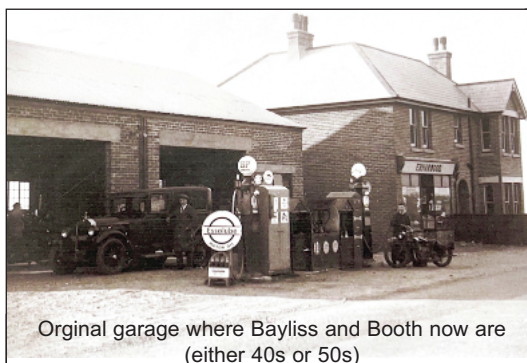
"Our success as a business is due to our location and visibility but most importantly our amazing staff and customers" says Matt. "We have many staff who have worked their entire lives at the Garage and worked with my grandfather and my dad, Stephen." He goes on to say, "I love hearing stories about the garage and the people who work here. There's too many special people who have made this garage work; my family are really grateful to all of them".

Between the 1990's and now, the Garage held franchises with Fiat and Vauxhall, but with the advent of Dacia in 2013 as part of the Renault Group, the garage focused on just Renault and Dacia.

Sadly, in 2013 too, Stephen Harwood passed away and is greatly missed today. Josephine Harwood became chairman of the board, Paul Hunt stepped up as managing director and Stephen's son Matthew came into the business to work alongside Paul.

Matt emphasises "Harwood's is a really special business, for 90 years it has stayed a family owned Island business, it has a brilliant staff of highly skilled individuals that move with the times, however our core values don't change. We believe in honesty and quality in our work. Our heritage of 90 years is your reassurance." Even as car technology changes or fuels change, Harwood's is looking forward to celebrating its 100th birthday in 10 year's time.

15



For Your Diary ... What's On ...

KEEP ACTIVE MOVE MORE CLASSES. BINSTAD COMMUNITY CENTRE ON TUESDAYS AT 11.20am AND WHIPPINGHAM VILLAGE HALL ON WEDNESDAYS AT 9.45am, 11am, 12.15pm, 1.30pm, 4pm. AND FRIDAYS AT 10.10am at ARRETON VILLAGE HALL. Go at your own pace exercise program to help improve strength, stamina and balance. CONTACT: **ANDY SAVAGE 07779 616189**

KEEP ACTIVE RELAX MORE (K.A.R.M.) CLASSES. SANDOWN BROADWAY CENTRE ON MONDAYS AT 4.15pm AND WHIPPINGHAM VILLAGE HALL ON WEDNESDAYS AT 2.45pm. A gentle movement program to calm and relax the body that is easy to learn and based on Tai Chi principles and can be done seated or standing. CONTACT: **ANDY SAVAGE 07779 616189**

BREATHE EASY ISLE OF WIGHT SUPPORT GROUP FOR ISLANDERS LIVING WITH CHRONIC LUNG CONDITIONS. MEETINGS HELD AT ARRETON VILLAGE HALL ON THE FIRST TUESDAY OF THE MONTH FROM 2PM TO 4PM. FOR FURTHER INFO GO TO [HTTPS://BREATHEEASYIOW.ORG](https://breatheeasyiow.org) OR CONTACT: **ANDY SAVAGE 07779 616189**

PARKINSONS UK ISLE OF WIGHT HAVE REGULAR WEEKLY EXERCISE CLASSES AT ARRETON VILLAGE HALL ON FRIDAYS AT 11.15am, 12.25pm and 2pm SPECIFICALLY SUITED FOR ANYONE LIVING WITH PARKINSONS. FOR FURTHER INFO CONTACT **ANDY SAVAGE 07779 616189**

Coffee Morning, Book Sale and Table Top Sale

Saturday 16th September from 10am – 12.30pm at St Mark's Church, Station Road, Wootton

Free Admission

Wanted: books, games, jigsaws, toys and clothing in good condition. Either bring to St Mark's from 9am on the day, or phone 078660 59422 to arrange collection.

Offers to help on the day would be appreciated

Elephant Club

A social group for people living with memory loss and for others just wanting an afternoon of good company.....and cake. If someone you care for has memory problems, the ELEPHANT CLUB will be meeting at St Mark's Church between 2-4pm second Thursday of each month. If you would like to exercise "the little grey cells" whilst having a laugh and eating cake, do come and join us. We would love to see you.

WOOTTON BRIDGE METHODISTS

Every Monday Morning 10.am till 12 noon. Come and enjoy coffee and chat at Wootton Methodist Church from 10am-12 noon every Monday until further notice. Everyone welcome.

Whitgar Morris, meet in the coffee lounge at St Mark's on Tuesdays 7:30pm - 9:30pm. New members, dancers or musicians welcome. For further details ring 880118.

Marks Brothers Bacon Butty Group

This group now meets on the second Wednesday of each month at 10.30am in St Mark's coffee lounge. The opportunity for the men of the village who would like to sort the world to rights over a coffee and a bacon butty. Please let Harry Kirby know if you will be attending. A small, voluntary, contribution towards costs always appreciated. 07814809083 or harryskirby@btinternet.com The group is very friendly and welcoming.

The "Crafty Ladies"

We meet on Wednesday afternoons at St Mark's Church, Wootton, from 1.30 p.m. 'till 4pm.

We would like to welcome new members to our friendly group, who get together to enjoy a variety of different crafts, no experience necessary. Come in and join us for a natter and a coffee/tea as well. Age is no barrier!

It's £4 a session, with the first one free.

Please call Jan on 882381 for more details

CREEKSIDE WOMEN'S INSTITUTE (WI) - Everyone welcome at 7.15pm on the second Wednesday of each month (except August) at the Methodist Church, Station Road, Wootton Bridge, IW. Visitors and new members always welcome. Contact: Marlene Cassidy 01983 882718.

Activities for September

Welcome back!

13th September Main Meeting

Our speaker is Graham Biss on the Nature Conservancy.

Our competition is any action you have done for nature and of course there is always our Best Bloom.

Visitors are always welcome to attend.

Don't forget our Book Club, Craft Club, Amble, Coffee and Chat, Monday games and chat in the Zoomiverse sessions.

GREEN CLEAN

Be green while we clean!

Eco-friendly domestic cleaners, with our own products & equipment, want to clean your home or office.

Local, friendly, reliable, insured
To discuss your requirements call Julia

01983 716464
Mobile: 0788 0784 906



ROOFING AND BUILDING

Tel: Richard
(01983) 611422

Slates, Tiles and Flat Roofing - Lead Flashings, Valleys and Bays, etc. - Insurance Re-roofs and any size repairs - General Building and Contract Work

Mobile: 07971 815301

Steven CHAPPLE

(incorporating Paul Chapple Heating)

**PLUMBING and HEATING
COMPLETE BATHROOMS
and TILING**

Telephone: 612611

Mobile: 07774 892712



CIPHE
Chartered Institute of Plumbing
and Heating Engineering



Join the Choir...
**You'll Be Glad
You Did!**

**Do you enjoy
singing?**

St. Mark's Church
Choir meets on
Thursday evening
6.30-7.30pm. We sing

inspiring and uplifting hymns and anthems. No experience necessary. Our practices are for preparing the choir to sing at church services and occasional social performances.

Come along and give it a try.

Any questions please e-mail:

David: davidmcculloch1968@gmail.com

PHIL MANSFIELD Building Services

- EXTENSIONS • DRAINAGE
- BRICKWORK • BLOCK PAVING
- EXTERNAL MAINTENANCE
- PATHS AND PATIOS • DRIVES

Mobile 07952 460269

Home/evenings 01983 615724

houseproud !

'solutions by Angela'

quality cleaning & ironing services

*help and support that works for you
(further assistance readily available)*

Call 07912 432 835

The Bridge

is Wootton's community magazine and
it needs contributors!

Do you have a story to tell, a piece of local history, or information about local activities?
If you do, we'd like to hear from you.

We can help you put together, and layout, your articles; even if you "can't write", we can help.

**If contributing to *The Bridge* is something
that interests you, contact:
David Bennison on 882783**

Interested in joining our loyal
group of volunteer deliverers?

More details
from David
Bennison on
882783



Wootton Bridge Townswomen's Guild

We are at Methodist Church Station Road
every 3rd Friday of the month 2-4pm

Please join us or call

Pauline 01983 759350

PROFESSOR CLEAN & CLEARANCE

Local House Clearance experts. Whether it's a house, rental, garage, garden, any items.

We specialise in hoarding issues and bereavement clearance. We are a family run business that provides an outstanding and professional service Islandwide. Committed to environmentally responsible practice.

FULLY LICENSED - CALL FOR A FREE QUOTE

Contact: 07376741576

Lushington Hill Bodyshop



**APPROVED
ACCIDENT
REPAIR CENTRE**



Lushington Hill Bodyshop Ltd
Lushington Hill, Wootton Bridge
Isle of Wight PO33 4RD

Tel 01983 885508

Fax 01983 884768

enquiries@lushingtonhillbodyshop.co.uk
www.lushingtonhillbodyshop.co.uk



WOOTTON TYRES

THE ISLE OF WIGHT'S PREMIER TYRE SPECIALIST

THE FAST FIT CENTRE with while you wait service

• **TYRES • TYRE REPAIRS • SERVICING •
BRAKES • EXHAUSTS**

• **DIAGNOSTICS • WHEEL ALIGNMENT**

Looking for professional car mechanics that can help you with car repairs, servicing, exhaust replacements and more? Wootton Tyres can help you with all your vehicle servicing and repair needs for a fantastic price!

01983 885 070

www.woottontyresltd.co.uk

UNIT 9, WOOTTON BUSINESS PARK,
WHITERAILS RD, WOOTTON PO33 4RH



W WOOTTON

Islandwide Sales & Lettings

Tel: 01983 883333

LOCAL INDEPENDENT ESTATE AGENTS

- With you from start to finish -

**41 High Street, Wootton
(next to Chemist)**

• OPEN 6 DAYS A WEEK •

www.woottonestateagents.com

sales@woottonestateagents.co.uk

D S ELECTRICAL SERVICES

— Established 1990 —

Free Estimates and Advice

**For all electrical work in the
home and office.**

Prompt, reliable service



Mob: 07787 512800

e-mail: dses@hotmail.co.uk

www.dsesiw.co.uk

Starting from £31.50p!

(for a 6cm x 3cm box)

This ad (6cm x 5cm) would cost £52.50p to
advertise your products or services in the
last 3 editions this year, in the runup to
Christmas.

Contact:

bridgeads@cofeparishorwoottonbridge.org.uk

IVY HALL B&B and Holiday Cottage

**Mill Square,
Wootton Bridge**

01983 884208

EVERY FRIDAY **Al Anon**

(family and friends of alcoholics) meet in Wootton so if alcohol is, in any way, affecting your life, this is the safe place to talk. Your anonymity is key to our success. Further details Harry or Sally on (01983) 638198). All conversations are entirely confidential.

GRANGE FARM HOLIDAYS

Red Squirrel Lodge (Gold Award)
Self Catering Holidays (Wheelchair Friendly)
OPEN ALL YEAR

- 3 Bedrooms, Sleeps 6
- Short Breaks Available
- Play Area & Accessible Garden & Grounds (including wildflower meadows)
- Dog Friendly (limited to one dog please)
- Off Road Parking

Contact: Mrs Rosemarie Horne
Grange Farm, Staplers Road, Wootton.
Tel: (01983) 882147
Email: info@grange-farm-holidays.co.uk
Web: www.grange-farm-holidays.co.uk

GEOFF LEATHER

Independent
Funeral Directors

24 HOUR SERVICE

— CHAPELS OF REST —

PRE-PAID FUNERAL PLANS

45 Upper St James Street,
Newport, Isle of Wight PO30 1LG

Tel: 529090 (24-hr)

A1 Garage Doors IW

Your local specialists for . . .

Garage Doors • Roller Doors
Remote control operators
Security Shutters & Grilles
— Same day Repair Service —

• **IW 884600** •
www.a1specialists.co.uk

Fancy keeping fit this year?

Then why not help deliver *The Bridge* magazine here in Wootton.

If you wish to join our band of volunteers, please contact David Bennison on 882783.

DON'T FORGET . . .

Please tell our advertisers
that you saw them in

The Bridge

MEWS STEVE

Single storey gutter cleaning.
Exterior painting including sheds,
fences and garage doors.

FREE ESTIMATES — REASONABLE RATES

Please call 07908 213885

E-mail: StevenMarkWarren938@gmail.com



COMPUWIGHT

Unit 6 Bumbles Arcade
40 High Street, Wootton

"Pick up your phone, Not your computer"

COMPUTER SALES & REPAIRS

884888 or 07780672228

Starting from £31.50p!

to advertise your products or services in the
last 3 editions this year, in the runup to
Christmas.

Contact:

bridgeads@cofeparishorwoottonbridge.org.uk



SERVICING
MOT
BRAKES
SUSPENSION
TYRES
DIAGNOSIS

COLLECTION & DELIVERY (IOW ONLY) AND
PRE-BOOKED COURTESY CARS AVAILABLE!*

CALL US TODAY ON 01983 885510 OR VISIT
US AT HARWOODS, LUSHINGTON HILL GARAGE,
PO334RD

MIKE O'DELL

Painter & Decorator

30 years experience
Registered independent
tradesman

07398 113635 or
(01983) 409659

H. V. TAYLOR & SON LTD

INDEPENDENT FUNERAL DIRECTORS

45 GREEN STREET, RYDE, ISLE OF WIGHT, PO33 2QE.

TEL: 01983 562082

WWW.HVTAYLOR.CO.UK



Compassionate 24HR Service

Serving the Island since 1905 - Pre-paid funeral plans

Offering Tailor made funerals from Cremations to

Burials as well as Direct Cremations

Funeral Directors

Mr Steve Whitehurst and Mr Richard Myers



Solutions Crystal Solutions Ltd

Caters for all your Electrical and Digital needs

Electrical Work

Installations, Repairs, Inspection and Design
No Job too small

Computer & Digital

Set-up, Installations, Networks, Help, Advice

steve@crystal-solutions-ltd.co.uk

Mobile 077 1028 2950

Tel: (01983) 529023

ANNA CHAPLAIN (Hilary Baldwin)

This is a person-centred ministry of spiritual care for older people of all faiths, cultures, spiritualities and contexts, and for their families and carers. The Anna Chaplain also offers advocacy for older people within church and community, they work with people living independently and within residential and nursing homes. The work of the Chaplain is defined by the wants and needs of their individual parish and is adapted accordingly.



For more information please contact Hilary by:

Tel: 07769588644

Email: annachaplain@cofeparishofwoottonbridge.org.uk

Website: <http://www.cofeparishofwoottonbridge.org.uk/anna-chaplain/>

Military Whist Drives

Teams of 4 are welcome to the drives held in the Methodist hall (parking in Station car park).

Meetings restart in October - 6th & 20th
£2.50 per person. Contact Colin on 882588.

Creature Comforts

Home Delivery Service

Tel: 01983 884270

Text: 07935 567 768

Email:

info@creaturecomfortsiow.co.uk

Complete and Frozen Foods
Cat Dog Wild bird Squirrel etc.

Free Island Delivery



Andrea



Mobile Hairdressing

Fully qualified and
experienced hairstyling in
your own home.
Please phone 612395

All Seasons Gardening Services

Regular Grass Cutting, Strimming, Hedges,
Routine Garden maintenance, Stump grinding
Turfing, Rotavating, Levelling,
over-grown clearance
Wootton 882879 (serving the area since 1999)
www.isleofwightgardening.com



ALLAN'S

**Domestic Appliances
repaired and serviced**

WASHING MACHINES,
TUMBLE DRYERS, COOKERS, FRIDGES,
GHD'S, VACUUM CLEANERS, etc.

DYSON and HENRY specialist

**Spare parts available and
delivered to your door!**

Bags, belts, filters, hoses, motors, etc.

Call 883790

Mob: 07723 340454

E-mail: allanswootton@gmail.com
Over 25 years experience



The Bridge

is Wootton's community magazine
And it needs contributors!

Do you have a story of local interest to
tell?

Is there a piece of local history you
would like to share?

Do you want to publish information
about local activities?

**If you do, we'd like to hear from
you.**

We can help you put together and lay-
out your articles;
even if you "can't write", we can help.

**If contributing to The Bridge is
something that interests you, contact
David Bennison on 882783**



**For fun, adventure and skills
for life, come and join
1st Wootton Scout Group**
Reg. Charity 1005194

Beavers 6 – 8yrs Monday 6.15 – 7.30pm
Cubs 8 – 10½yrs Wednesday 6.30 – 8pm
Scouts 10½ – 14yrs Tuesday 6.30 – 8.30pm
Explorers 14 – 18yrs Thursday 7 – 9pm

All sections open to boys and girls.
Adults welcome to train as Leaders.

Contact Ali on 07785 934644
for further details



**HUNT
FOREST
GROUP**

Pritchetts Way,
Rookley Industrial Estate,
Rookley, Ventnor PO38 3LT
01983 721426
www.huntforest.com

Specialists in walk behind and ride on mowers - demon-
strations available upon request.

Full servicing and repairs available for all lawnmower
brands with an Islandwide collection and delivery service.

JOHN DEERE @huntforestgroup

GROWING TOGETHER

GERVASE LAIGHT PLUMBER

Kitchen & Bathroom Installation
General Plumbing Maintenance

CITY & GUILDS QUALIFIED
— Free estimates —

**RELIABLE SERVICE AT A
REASONABLE PRICE**

Tel: 01983 760544

Mobile: 07909 902004

DOMESTIC CLEANING & IRONING SERVICES

PRACTICAL HELP & SUPPORT
FULLY INSURED. NO AGENCY FEES
PLEASE CALL ANGELA
07912 432835

Starting from £31.50p!

to advertise your products or services in the
last 3 editions this year, in the runup to
Christmas.

Contact:
bridgeads@cofeparishorwoottonbridge.org.uk

EXTRACTA CLEANING

For all your cleaning requirements
Carpets & Upholstery - Sofa/Rug Cleaning
End of Tenancy Cleaning - One off Deep Cleans
Hoarder Clean Ups - Environmental Cleans
Free Estimates - Fully Insured

28 Years Experience

Home: 01983 528720
Mobile: 07967531576



WOOTTON YOUTH CLUB (WYC)

WYC is a place where young people can meet with friends and join in a range of activities such as ball sports, cookery, table tennis, badminton, pool, table football, film nights, art projects, community help projects and visits to PGL Little Canada to participate in the available on-site activities. We have a café, offering various tuck items and refreshments. The young people jointly help in programming the weekly sessions and activities. Our team of trained, professional staff (including special needs support) are here to ensure the young people have fun and help them understand the world around them.

As youth workers we have time to talk through any questions and concerns.

We are located at the Old School on New Road in Wootton and session times are:

Thursdays Night 8-16 years 6.30-8.30pm

WYC welcomes young people from surrounding areas and friends from other parts of the Island also.

Please contact us for more information and do check out our WOOTTON YOUTH CENTRE Facebook page.

Contact email: woottonbridgeyc@gmail.com or message us on FB: wootton bridge youth club

Tom Pellet, Senior Youth Worker

WOOTTON SCOUT HALL FOR HIRE.

Hall including modern
kitchen, central heating, rear
garden etc. Reasonable rates.

Contact Peter on 883385 or
petefiow@uwclub.net for
bookings.

WOOTTON BRIDGE METHODIST CHURCH (Station Road)

Minister: Revd Frances Watson

Sunday Morning Service 10am

Evening Services as announced

Minister's Message

On Sunday 30th July many gathered with David Plumb, Phyl his wife, and many of their family, to worship, and to thank God for Dave's ministry among us over the past 9 years. Dave has now 'sat down' from formal ministry and he and Phyl will now be able to enjoy time for themselves.

I, Frances Balham, will be ministering through Dave's churches. Having been on the Island for 16 years I am fortunate to know some of you already, and look forward to meeting others. Please be patient, and bear with me, as I do my very best to share my time amongst the 10 churches God has given me to work with over the next several months.

We have begun the process to actively seek a new minister for Dave's section to begin in September 2024 - I'm sure we are all praying that the right person will be called and respond.

God bless

Rev Frances Watson

Preachers for September

3rd	Sept	Ordinary	Local arrangement
10th	Sept	Ordinary	Geddes - Short & Snappy
17th	Sept	Ordinary	Whittingstall
24th	Sept	Ordinary	Local arrangement

tb

"FRIENDS OF ST EDMUND'S"

OPEN WEEKEND

Sat 9th & Sun 10th SEPTEMBER 2023

10.30am – 6pm

St Edmund's Church, Church Road,
Wootton Bridge



Theme for Exhibits

"TRANSPORT THROUGH THE AGES"

Come and support us and see the displays of photos, local information etc

Entry free, Refreshments

FRIENDS OF ST EDMUND'S OPEN WEEKEND

Saturday September 9th to Sunday
September 10th, 10.30am to 6pm
daily.

Our main theme this year is *Transport
Through The Ages.*

All visitors are very welcome



tb

**OPEN
WEEKEND**

PARISH COUNCIL information

Meetings:

Meetings: usually third Tuesday in every month (except August) at 7pm in The Old School, New Road - details at HIC, on village noticeboards and on website.

Parish Councillors:

Barry Abraham
John Ward
Trish Evans
Dave Burley
Barrie Hailstone, *Chair*
Daryll Pitcher
Linda Pitcher, *V.Chair*
Lee Lemon
- Vacancy -
Ian Yeo

Liz Kingston, *Clerk*
Lorna Morey, *Assistant Clerk*

All can be contacted at the HIC on 884555.

Office opening times:-

PARISH COUNCIL
Mon. Closed;
Tues. 9.00am-2.00pm;
Wed. 9.00am-2.00pm;
Thurs. Closed;
Fri: 9.00am-2.00pm

BEAT OFFICER

First Tuesday in month
10am-12 noon or messages can be left for the Police.

WOOTTON BRIDGE PARISH COUNCIL

5 Joanne's Walk, Brannon Way,
Wootton Bridge, Ryde, IW
PO33 4NX

tel: 884555
email: clerk@woottonbridge.org.uk
website:
www.woottonbridge.org.uk

Full details of all facilities available at the HIC can be obtained from the Parish Clerk or on the website.



Wootton Bridge
PARISH COUNCIL

Report from Liz Kingston, Clerk – Wootton Bridge Parish Council.
Telephone: 884555. Email clerk@woottonbridge.org.uk
Local IW Councillor for Wootton Bridge:
New Ward Councillor TBA Telephone TBA
Email TBA

Wootton Bridge Parish Council has a Facebook page – please “like” – which displays all the latest information and you are welcome to comment on any topic.

Party in the Park (the Chair comments below)

A huge thank you to everyone who came and supported the event, especially as it clashed with a few other island events! We raised £388 from the raffle for Care in the Garden and the Parish Council would like to thank everyone who donated a prize and bought tickets. Thank you also to all the stall holders, food providers and entertainment as well as the wonderful volunteers who gave up their time.

Parish Councillor Vacancy

Chris Cory who we would like to thank for his help has recently resigned and we now have a Parish Councillor vacancy which we will be looking at filling by co-option at October's meeting. If anybody is interested, please contact the Clerk.

Village Partnership

If anyone is interested in joining Wootton Village Partnership where you will be able to help with organising various village events and projects and work together for the benefit of Wootton, then please email us at: clerk@woottonbridge.org.uk.

20mph Zones

Wootton Bridge Parish council would like your views on whether you would support a 20mph speed limit being introduced on all side roads in Wootton such as Palmers Rd, St Edmunds Walk, Mary Rose Ave, New Rd and Church Rd. Have your say by emailing us at clerk@woottonbridge.org.uk. We are also looking for volunteers in setting up a village Speedwatch. Please contact us.

Coffee Morning 27th September

On Wednesday 27th September we will be holding a coffee morning at Brannons (where the Post Office is) from 10-12pm. Wootton PCSO Steve Hull and Environmental Officer Sophia Hellyer will both be attending and hopefully a representative of Island Roads. Please come along as a chance to voice your concerns and questions. The Post Office will still be open.

Multiply Free Drop-In Sessions

From baking to bills, brush up on your everyday numeracy skills with Multiply. Available at Brannons on Tuesday 12th and 26th September and 17th October 10am-12pm. For any one over the age of 19.

Chair's Message – Cllr Barrie Hailstone

It would seem we have entered Autumn already, our Summer was June, nevertheless Party in the Park was a great success. The morning was dull and overcast, however by midday it turned out fine. All, I believe, enjoyed themselves, store holders and visitors alike. A big thank you to the Rugby Club and the Scouts for providing toilet facilities.

Several residents have made complaints about speeding motorists, particularly delivery van drivers. The Parish Council is taking this seriously and I can confirm that we have written to one company requesting they advise their drivers to abide by the highway code when driving in and through our village. I will continue with such actions if found necessary to do so.

Speeding traffic is also a bane too, which I have argued against since first serving on the Council in 2004. The Parish Council, will try to bring about the change in the speed limits in our side roads from 30 mph to 20 mph, thus creating a safer environment for the elderly, the infirmed and young of our village. In order for us to be successful in this venture, we need your help. Please write to our Clerk asking for the speed limits to change. The more letters we get, the stronger our case will be, when we put it to the IOW County Council.

It is understood COVID is once again on the rise, so please take all necessary precautions and stay and remain safe.

If you have any areas of concern, or want to report any incidents, please either visit the Parish Office in Brannon Way, or contact us by phone (01983 884555) or email clerk@woottonbridge.org.uk

Liz Kingston – Clerk

Creek places - contributed by Doreen Gazey

HUMAN ACTIVITY IN CHANGING ENVIRONMENT

From 4000 BC the Island had become separated from the mainland as sea levels rose, by a distance of as much as 2-4 kilometres from its present position. Remains of wooden fish traps have been discovered in the silts. Around 3000 BC the demise of the oak forest on the Wootton-Quarr coastline can be seen with the poisoning of tree roots.

By Roman times the sea level had risen about 2 meters below that of today. Discovery of the remains of two salt drying kilns have been found below the high water level. To operate effectively it would have been essential for these kilns to be sighted above high water.

By around 800 AD large quantities of stout wooden stakes were constructed along the Quarr coastline, one kilometre long parallel to the shore. Study of these has revealed that a workforce of skilled and unskilled workers had constructed structures such as fish weir, capable of feeding a growing coastal community.

At the mouth of Wootton Creek lies Young's Slipway. In Saxon times, a 'sea pond' was constructed here with the aid of wooden hurdles. This may have been the 'pond, in the arm of the sea at Wodyton' that the monks of Quarr Abbey mention in a document from AD 1304. This area was then known as Fishhouse

FISHBOURNE AND QUARR

Historically these two places on the northeast coastline of the Isle of Wight have been linked since Neolithic times. With archaeological research carried out between 1989 and 1994, lying in soft sediments and peats between high and low water mark. On exceptionally low tides, wooden trackways of Neolithic date can be observed at the low water mark. Slightly inshore, Stone Age implements of flint tools have been found. Where Roman and medieval ships had delivered cargoes to these shores, delicate materials like leather, wood and rope along with all types of pottery have been found.

FISHBOURNE

The hamlet at the mouth of Wootton Creek doubtless represents the place called Fisseburne [1267], Fishbourn or Fishhouse, upon the coast, which the Abbot of Quarr in 1365-6 had a licence to inclose with a crenellated wall. He was also permitted to build castles and fortalices there. Fishborn Creek [1769] 'The fish stream, or the stream where fish are caught' OE fisc + burna. Name originally referred to what is now called Wootton Creek, nearby on east side of the entrance was a place called 'Fisshehous' the fish house, recorded from 14th century until 1844.

The creek is a small scenic waterway used by a wide variety of pleasure craft, fishing boats and small commercial vessels. In the post-medieval period, a notable shipbuilding industry grew up, and by the early nineteenth century, large ships were being constructed here. A lease dated October 1813 to James and Daniel List, shipbuilders, includes a plan of the shipyard, together with a painting of a 36-gun man-of-war, the 'Magicienne', being launched from Fishbourne in 1812.

LAUNCH OF THE MAGICIENNE AT FISHBOURNE

In 1824, Lord Yarborough signed an indenture with Daniel List of Fishbourne for a second vessel a 351-ton yacht. She was an early example of a fine-lined clipper and was the flagship of the Royal Yacht Squadron, based at Cowes. Completed in 1826 at a cost 25,000 pounds or about 225,000 pounds in today money (1956), she was towed to Cowes for fitting out, and named 'Falcon'.

THE FALCON BUILT AT FISHBOURNE

Lord Yarborough sold her in 1836 to Baring Bros., for 5,000 pounds, who used her as one of the earliest China tea clippers, before selling her on in 1840 to Jardine, Mathieson & Co., China Trading House. Falcon disappeared in the mid 1850's.

Other well-known characters of the area included Jim and Don Young, who carried on the tradition of boatbuilding.

Mr. Frank Young, who owned the foreshore from a point west of the "Coastguard Cottages" along the frontage of the ferry terminal, the R.V.Y.C. headquarters as far as a point some hundred yards above the shingle bank.

During World War Two, Ranelagh Yacht Yard, produced, with the help of 500 craftsmen, small naval craft, dinghies, air-sea rescue vessels, fast motor boats, pontoons, assault craft and the like, for His Majesty's Government.

Sources:

Time and Tide - An archaeological survey of Wootton-Quarr Coast. - Isle of Wight Council & English Heritage - 1997- W. Page The Victoria History of the Counties of England: Hampshire and the Isle of Wight, vol. 5, p.151, ed. 1912 - London: Constable
P G Stone Architectural Antiquities of the Isle of Wight, vol.1, p.32, 1891 - Harbours of the Solent. John Scott Hughes. London 1956 -
Isle of Wight County Records Office, Newport - ifh 57 pages 28/29 - Peter Gawn. 5754 Ebbtide Street. Box 2541. SECHELT B.C. Canada VON 3A0



'The Bridge'
is delivered free
to over 1,750 homes and
businesses in Wootton

Note to 'Bridge Deliverers'
the October 2023 issue will be avail-
able to pick up from the Churches on
SATURDAY 30th September 2023

Solution - July/August Sudoku

7	5	1	6	3	4	8	9	2
4	8	2	5	1	9	7	3	6
6	3	9	7	8	2	4	5	1
8	9	3	4	6	1	2	7	5
2	4	6	8	7	5	3	1	9
1	7	5	9	2	3	6	8	4
3	6	4	1	5	7	9	2	8
5	2	8	3	9	6	1	4	7
9	1	7	2	4	8	5	6	3

If you have any particular
areas of concern, or want to
report any incidents, please
either visit the Parish Office
in Brannon Way, or contact
us by phone or email

Telephone:
01983 884555

Email:
clerk@woottonbridge.org.uk

		5			2		6	3
1		2	3		4	5		
		7			6	9		
	1	4	8	2		3		
	3						7	
		8	9		3	6	1	
		3	2		9			
2			1			4		9
9	7		4			8	2	

SUDOKU

Fill in the grid with digits in
such a manner that every row,
every column and every 3x3
box accommodates the digits
1-9, without repeating any.

September

by Annette Wynne

Golden in the garden,
Golden in the glen,
Golden, golden, golden
September's here again!
Golden in the tree tops,
Golden in the sky—
Golden, golden, golden
September's going by!

Any article published in
The Bridge is copyright and may
not be used without the author's
permission.

'THE BRIDGE'
Copy deadline date:
FRIDAY 15th SEPTEMBER 2023
(12 noon) for **OCTOBER 2023**

The publisher does not necessarily hold
the same views as those expressed by
contributors and reserves the right to
refuse or alter material.

ST EDMUND'S and ST MARK'S CHURCH

Churchwardens: Ann Capps and Mary Peters

For Baptisms, Weddings and Funerals please contact us at:
stedmundsandstmarks@gmail.com or leave a message on 01983 301880
(we will respond as soon as we can)

Published by St Edmund's and St Mark's Church and produced by members of
The Bridge Magazine Group. Printed by Bishops Printers 023 9233 4900

All queries concerning
The Bridge magazine
please telephone
David Bennison on
882783 or the
Churchwardens.

E-mail Addresses

Send your advertisements for inclusion
in 'The Bridge' to:
bridgeads@cofeparishofwoottonbridge.org.uk

Send your articles, news, diary dates and comments
about 'The Bridge' to:
thebridge@cofeparishofwoottonbridge.org.uk