

**NOVEMBER 2023**

**DELIVERED FREE**  
(by our wonderful volunteers)

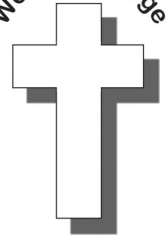
**THE CHURCH PARISH MAGAZINE OF WOOTTON**

# *The Bridge*

*Building Bridges in the Community*

St Edmund's  
& St Mark's

Wootton Bridge



## Full Steam Ahead

I have removed the branding from the picture on this page, so you would probably never guess that it is the cover of the job description (or "Profile" in church-speak) for the priest we hope to appoint to serve the parishes of East Cowes, Whippingham and Wootton. By the time you read this, the job will have been advertised and, we hope, the Profile itself will be available for you to read on our parish website. Even if church is not your thing, you may be interested to see how our three communities and their needs are described in the document. I hope that you will be surprised and pleased by the amount of thought and creativity that has gone into the preparation of what could have been just a simple, boring job specification.

But why, you may ask, do we put a picture of an old steam locomotive on the cover of a document intended to pique the interest of potential applicants for a new clergy job? Yes, I know that W.G. Audrey, the author of the "Thomas the Tank Engine" books, was a clergyman, but that's not the point. It is much more relevant that the IW Steam Railway (with which I have no connection other than as a frequent visitor) is widely considered to be one of the more innovative and entrepreneurial heritage railways in this country. The Steam Railway has demonstrated a talent for making the past real and relevant in

the here and now. That is exactly what the Church has to do, and for two thousand years has done, with its own bigger and more encompassing message.

We all know that skilled public service jobs on the Island are not always easy to fill, and this applies to clergy as it does to doctors, teachers and the like. The last three years have demonstrated to us in Wootton that, good as we are at self-help and using our own resources to get things done, our church also needs its ordained clergy. If you can, do pray with us that a gifted new leader will be found for our parishes, and that we can begin a creative new chapter in the life of the Church in this part of the Island.



David Bennison

**For November & Remembrance Services, please see Page 3**



## Open Days for September 2024 Admission

Life involves us all making many decisions every single day. Within every hour we make decisions whether it be what you are going to have to breakfast, whether you fancy tea or coffee and what you are going to wear – all of these decisions before you have even started your day!

When you become a parent these are multiplied by needing to make decisions for your child as well as yourself and one really big decision that parents need to make with their school aged children is, which school to send their child to!

On the Isle of Wight we have a mix of schools and within the Wootton area parents have a choice from a smaller one form entry school to bigger schools that are not too far away, however I feel it so important that children attend their local school, in particular if they are able to walk there!

It is at this time of year I so relish the opportunity to show our school to the many prospective parents we have come in, and again I have the chance to remind myself of how good our school is! Often school life gets so busy with many expectations to meet, but we continue to strive to deliver learning that is fun and linked to children's interests and level of attainment using the local area and wider afield, to enrich children's learning. We pride ourselves in that the children are at the centre of all that we do - learning is adapted to meet the varied needs of the children we have to ensure that by the time they leave us, our school values REAP (Respectful, Empowered, Aspirational and Persevering) are fully embedded to support their transition to their next stage of learning. And this is why our whole ethos at Wootton Primary is 'Every child can achieve success' - this will look different for each and every child but is at the heart of all that we do.

So if you have or know a child due to start school in September next year, do come along and see us in action, we look forward to sharing our school with you.



*Mrs Jane Wilford  
Headteacher*



## Wootton Community Primary School Open Days for September 2024 Admission

Church Road, Wootton Bridge, Ryde, Isle of Wight, PO33 4PT

Tel: 01983 882505

Email: [office@woottonpri.iow.sch.uk](mailto:office@woottonpri.iow.sch.uk)

Website: [www.woottonprimaryschool.co.uk](http://www.woottonprimaryschool.co.uk)

**Tuesday 14th and  
Thursday 16th  
November 2023**

**Tours at 10:00am  
and 1:30pm.**

**No need to book,  
just turn up to a  
session.**

**COME AND SEE US IN ACTION!**

*Also an opportunity to speak to the  
Headteacher and House Captains, and  
ask any questions you may have.*





### "DID YOU KNOW TRAINS ARE RUNNING AGAIN IN WHITWELL?" (Not full size ones!)



On the third Thursday evening of the month, except December, a group of like-minded men and women share their interest in model

railways. The group is part of the **N Gauge Society**. You do not need to be a member of the Society to join us, you will be very welcome at any of our meetings in **Whitwell Village Hall PO38 2PU**, from 6.30 pm.

We have a group modular layout which we take to exhibitions, the next one is in May 2024 at Havenstreet on the IOW Steam Railway. We hold an annual Open Day in October in Whitwell.

At our meetings we have a large four line layout and members bring their trains to run during the evening. Some of members have been building micro layouts in cases and boxes which they also bring.

We are currently exploring having a permanent place to meet later in 2024.

What is stopping you? Come and join us.

There is more information on our website: [www.ngsiow.uk](http://www.ngsiow.uk)

### 'Big Cooked Breakfast' with seasonal stalls

**Saturday 9th December 2023 from 9.30am to 12.00 midday** at St Mark's Church. Live music with Amy Jolliffe.

Stalls, crafts, tombola, quality clothing, decorations, homemade cakes, books and toy stall.

Also a Save the Children stall and a RSPCA collection point for food, blankets, toys and towels.

Offers of help would be gratefully received.

Items required: good quality clothing (baby-adult), toys, puzzles, games, teddies and Christmas decorations.

Collection can be arranged by phoning 078 660 59 422

All proceeds, apart from Save the Children, will go to Church Funds.



### Stay&Play @ St Mark's Church

Looking for somewhere to take your young child on a chilly Thursday morning? St Mark's is extending its former Little Lions club to all children (with their carers) for babies and up to eight years old. The sessions will run from 9.15 – 11.30 and include some themed activities. The first session on Thursday 9th November will be an autumn theme. Bring your child/ren and enjoy a range of art, craft and play activities along with stories and songs.

Refreshments will be available for children and adults.

Leaders are all DBS checked and have experience working with children and families. Cost £2 per family.

For more details email [welcome.stmarks@gmail.com](mailto:welcome.stmarks@gmail.com)

## REMEMBRANCE SERVICES

**Sunday November 12th 3pm** - War Memorial at St Edmund's Church.

The annual Remembrance Sunday service will take place at the War Memorial at 3pm on Sunday November 12th.

Please do come and join us.

**Sunday November 12th 10am** - St Mark's Church

A service for Remembrance Sunday will take place at St Mark's Church starting at 10am.

The service will include the minute's silence at 11am.



## Church Services in Wootton during November

(Please be aware that all services of Holy Communion are subject to a priest being available to take the service)

The relaxation of COVID regulations means that it is no longer necessary to book for services but you will be asked to sanitize your hands.

Please wear a mask if you would feel more comfortable with it.

We are now able to offer the Brunch service to everyone!

### ST EDMUND'S

#### NOVEMBER

Sun 5th	0800 Holy Communion
Wed 8th	9.30am Morning Prayer
Sun 12th	1700 Evensong (**)
Wed 15th	0930 Holy Communion
Wed 22nd	0930 Holy Communion
Sun 26th	1700 Evensong (**)
Wed 29th	0930 Holy Communion

### ST MARK'S

#### NOVEMBER

Wed 1st	1115 Café Communion (*)
Sun 5th	0930 Brunch Service
	1700 Service of Thanksgiving for the Departed
Sun 12th	1000 Remembrance Holy Communion and Explorers
Sun 19th	0930 Morning Worship followed by the Big Mac Talk
Sun 26th	0930 Holy Communion

(\*) If you would like to come to Café Communion, please leave us a message on the parish answerphone 301880 or email: [stedmundsandstmarks@gmail.com](mailto:stedmundsandstmarks@gmail.com).

(\*\*) **Please note revised winter start time**

## George Rayner, Founder of *The Bridge*

*Last month, we announced the death at the age of 97 of our founder, the Revd. Canon George Rayner. Over the next few months we shall be publishing George's own account of his life; this instalment tells of his early life, before he was ordained.*



Revd. Canon George Rayner

George was born, the youngest of three sons, to George and Mabel Rayner, in Oakfield, his grandmother's home, during a snowstorm (!) on January 18th, 1926.

Brought up in Ryde, his schooling began at the age of 4 yrs. at Mount Street CofE Infants' School, until at the age of 8 he was transferred to Holy Trinity CofE School in Player Street. At 9 years old, he moved on to Green Street CofE School from whence in 1937, having passed the 11+, made the final move to Sandown Secondary School.

Taking the School Certificate exam in 1942, he secured sufficiently high marks to be

granted "Matriculation", which would enable him to proceed at a future stage to some form of higher education, which qualified him eventually to be accepted for theological training.

His passion was to be a printer and leaving Sandown at the age of 16, was accepted as an apprentice at Yelf Bros. Ltd., at Newport who were at that time the premier printers in the Island with the best range of modern machinery.

With the shortage of skilled men, he and his fellow apprentice, John Jackson, found themselves doing work that would have been the prerogative of the older skilled apprentices and journeymen. Printers were favoured, working only a 5-day week in those days.

In return for a full week's work, the pay was 5/- (25p) per week, the cost of rail travel from Ryde, 7/- (35p) per week, He had to work as a Saturday butcher's errand boy gaining a further 2/6d to bridge the financial gap.

Being 16yrs. of age when he joined Yelf's, in August 1942, he was paid only that which a 14 years old (the then school-leaving age) would receive.

Conscription began at the age of 18 years of age, and under the Bevin Scheme to recruit miners (many of whom had left the pits to work in aircraft production), with insufficient volunteers, using a ballot, 10% of every registration were drafted into the pits, of whom, George was one, starting work at Easter 1944.

Strangely, George, after the initial shock, settled into the work, and when he eventually was discharged in October 1947, had reached the responsible post as an "Onsetter", (the youngest in the area) giving him charge of the running of the shaft, something of which he was very proud.

He was tempted to make it a career as he was offered a place at a Mining College to train as a mine manager, but the printing and the Island drew him back to his roots, to the family home "The Brewer's Arms" in Ryde, where his father was the licensee.

Opening his own business in Castle Street, Ryde, his printing career began to give way to a calling he had never expected.

*[to be continued]*

## For Your Diary ... What's On ...

**KEEP ACTIVE MOVE MORE CLASSES.** BINSTAD COMMUNITY CENTRE ON TUESDAYS AT 11.20am AND WHIPPINGHAM VILLAGE HALL ON WEDNESDAYS AT 9.45am, 11am, 12.15pm, 1.30pm, 4pm. AND FRIDAYS AT 10.10am at ARRETON VILLAGE HALL. Go at your own pace exercise program to help improve strength, stamina and balance. CONTACT: **ANDY SAVAGE 07779 616189**

**KEEP ACTIVE RELAX MORE (K.A.R.M.) CLASSES.** SANDOWN BROADWAY CENTRE ON MONDAYS AT 4.15pm AND WHIPPINGHAM VILLAGE HALL ON WEDNESDAYS AT 2.45pm. A gentle movement program to calm and relax the body that is easy to learn and based on Tai Chi principles and can be done seated or standing. CONTACT: **ANDY SAVAGE 07779 616189**

**BREATHE EASY ISLE OF WIGHT SUPPORT GROUP** FOR ISLANDERS LIVING WITH CHRONIC LUNG CONDITIONS. MEETINGS HELD AT ARRETON VILLAGE HALL ON THE FIRST TUESDAY OF THE MONTH FROM 2PM TO 4PM. FOR FURTHER INFO GO TO [HTTPS://BREATHEEASYIOW.ORG](https://breatheeasyiow.org) OR CONTACT: **ANDY SAVAGE 07779 616189**

**PARKINSONS UK ISLE OF WIGHT** HAVE REGULAR WEEKLY EXERCISE CLASSES AT ARRETON VILLAGE HALL ON FRIDAYS AT 11.15am, 12.25pm and 2pm SPECIFICALLY SUITED FOR ANYONE LIVING WITH PARKINSONS. FOR FURTHER INFO CONTACT **ANDY SAVAGE 07779 616189**

### Elephant Club

A social group for people living with memory loss and for others just wanting an afternoon of good company.....and cake. If someone you care for has memory problems, the ELEPHANT CLUB will be meeting at St Mark's Church between 2-4pm second Thursday of each month. If you would like good company and laughter, and to exercise "*the little grey cells*" whilst eating cake, do come and join us. We would love to see you. Each month's programme is different so we hope there will be something for everyone to enjoy.

### **WOOTTON BRIDGE METHODISTS**

Every Monday Morning 10.am till 12 noon. Come and enjoy coffee and chat at Wootton Methodist Church from 10am-12 noon every Monday until further notice. Everyone welcome.

**Whitgar Morris**, meet in the coffee lounge at St Mark's on Tuesdays 7:30pm - 9:30pm. New members, dancers or musicians welcome. For further details ring 880118.

### **Marks Brothers Bacon Butty Group**

This group now meets on the second Wednesday of each month at 10.30am - 12 noon in St Mark's coffee lounge. The opportunity for the men of the village who would like to sort the world to rights over just a coffee (if you're not a fan of bacon) or include the bacon butty too. Please let Harry Kirby know if you will be attending. A small, voluntary, contribution towards costs always appreciated. 07814809083 or [harryskirby@btinternet.com](mailto:harryskirby@btinternet.com) The group is very friendly and welcoming.

### **The "Crafty Ladies"**

We meet on Wednesday afternoons at St Mark's Church, Wootton, from 1.30 p.m. 'till 4pm.

We would like to welcome new members to our friendly group, who get together to enjoy a variety of different crafts, no experience necessary. Come in and join us for a natter and a coffee/tea as well. Age is no barrier!

It's £4 a session, with the first one free.

Please call Jan on 882381 for more details

**CREEKSIDE WOMEN'S INSTITUTE (WI)** - Everyone welcome at 7.15pm on the second Wednesday of each month (except August) at the Methodist Church, Station Road, Wootton Bridge, IW. Visitors and new members always welcome. Contact: Marlene Cassidy 01983 882718.

### **WI Activities for November**

**November 8th** - Come and *Free your Interior Design*

*Imagination* with Paul Walden and enter our competitions with a design for wallpaper and a Best Bloom. Visitors are always welcome at this meeting. 7.15pm start at Wootton Methodist Church Hall.

**November 18th** - we have a table at the WI Fayre at the Parish Hall in Newport.

**November 22nd** - singalong Christmas Concert at Wootton Methodist Church.

**November 23rd** - Whippingham Taster Day

**November 24th** - Northshore and East Yar group meet with a speaker - 'The History of Underwear'.

**November 25th** - Creekside Craft Day at Methodist Church Hall. 1pm start.

Don't forget our Book Club, Craft Club, Amble, Coffee and Chat. The Monday games and chat in the Zoomiverse sessions will be back when the weather closes in.





# HOVER DAYS

Hover and coach excursions.

25 <sup>th</sup> November Bournemouth Christmas Market	16 <sup>th</sup> December Winchester Christmas Market
20 <sup>th</sup> January Oxford Day Trip	14 <sup>th</sup> February Bath Day Trip
2 <sup>nd</sup> April Windsor Day Trip	11 <sup>th</sup> April Arundel Day Trip

To book call **0345 222 0461** (Monday to Friday between 9am and 5pm)  
or visit [www.hovertravel.com/hover-days](http://www.hovertravel.com/hover-days)

**HOVER TRAVEL**

## GREEN CLEAN

*Be green while we clean!*

Eco-friendly domestic cleaners, with our own products & equipment, want to clean your home or office.

Local, friendly, reliable, insured  
To discuss your requirements call Julia

**01983 716464**  
Mobile: 0788 0784 906

## houseproud !

'solutions by Angela'  
quality cleaning & ironing services

*help and support that works for you  
(further assistance readily available)*

Call 07912 432 835

## Plumber / Handyman

Taps, WCs, Basins, Sinks and  
showers renewed and installed.

*No job too small*

**Please call Mike**  
**07710 085898**



## WOOTTON TYRES

THE ISLE OF WIGHT'S PREMIER TYRE SPECIALIST

THE FAST FIT CENTRE with while you wait service

• TYRES • TYRE REPAIRS • SERVICING •  
BRAKES • EXHAUSTS

• DIAGNOSTICS • WHEEL ALIGNMENT

Looking for professional car mechanics that can help you with car repairs, servicing, exhaust replacements and more? Wootton Tyres can help you with all your vehicle servicing and repair needs for a fantastic price!

**01983 885 070**

[www.woottontyresltd.co.uk](http://www.woottontyresltd.co.uk)

UNIT 9, WOOTTON BUSINESS PARK,  
WHITERAILS RD, WOOTTON PO33 4RH



## ROOFING AND BUILDING

Tel: Richard  
(01983) 611422

Slates, Tiles and Flat Roofing - Lead  
Flashings, Valleys and Bays, etc. -  
Insurance Re-roofs and any size  
repairs - General Building and  
Contract Work

Mobile: 07971 815301

## Digital Security

The UK Cyber Security Centre has warned that we should all expect an increase in cyber & phishing attacks. Don't open unexpected emails or click on suspicious links, and keep your devices updated.  
Please remain alert!

## PROFESSOR CLEAN & CLEARANCE

Local House Clearance experts. Whether it's a house, rental, garage, garden, any items.

We specialise in hoarding issues and bereavement clearance. We are a family run business that provides an outstanding and professional service Islandwide. Committed to environmentally responsible practice.

FULLY LICENSED - CALL FOR A FREE QUOTE

Contact: 07376741576

## Steven CHAPPLE

(incorporating Paul Chapple Heating)

**PLUMBING and HEATING  
COMPLETE BATHROOMS  
and TILING**

Telephone: 612611

Mobile: 07774 892712



**CIPHE**  
Chartered Institute of Plumbing  
and Heating Engineering



## Lushington Hill Bodyshop



**APPROVED  
ACCIDENT  
REPAIR CENTRE**



Lushington Hill Bodyshop Ltd  
Lushington Hill, Wootton Bridge  
Isle of Wight PO33 4RD

**Tel 01983 885508**

**Fax 01983 884768**

[enquiries@lushingtonhillbodyshop.co.uk](mailto:enquiries@lushingtonhillbodyshop.co.uk)  
[www.lushingtonhillbodyshop.co.uk](http://www.lushingtonhillbodyshop.co.uk)

## D S ELECTRICAL SERVICES

— Established 1990 —

**Free Estimates and Advice**  
**For all electrical work in the  
home and office.**  
**Prompt, reliable service**

**Mob: 07787 512800**



e-mail: [dses@hotmail.co.uk](mailto:dses@hotmail.co.uk)  
[www.dsesiw.co.uk](http://www.dsesiw.co.uk)

## PHIL MANSFIELD Building Services

- EXTENSIONS • DRAINAGE
- BRICKWORK • BLOCK PAVING
- EXTERNAL MAINTENANCE
- PATHS AND PATIOS • DRIVES

Mobile 07952 460269

Home/evenings 01983 615724

## IVY HALL B&B and Holiday Cottage

**Mill Square,  
Wootton Bridge**

**01983 884208**

**EVERY FRIDAY *Al Anon***

(family and friends of alcoholics) meet in Wootton so if alcohol is, in any way, affecting your life, this is the safe place to talk. Your anonymity is key to our success. Further details Harry or Sally on (01983) 638198). All conversations are entirely confidential.

**GRANGE FARM HOLIDAYS**

Red Squirrel Lodge (Gold Award)  
Self Catering Holidays (Wheelchair Friendly)  
**OPEN ALL YEAR**

- 3 Bedrooms, Sleeps 6
- Short Breaks Available
- Play Area & Accessible Garden & Grounds (including wildflower meadows)
- Dog Friendly (limited to one dog please)
- Off Road Parking

Contact: Mrs Rosemarie Horne  
Grange Farm, Staplers Road, Wootton.  
**Tel: (01983) 882147**  
Email: [info@grange-farm-holidays.co.uk](mailto:info@grange-farm-holidays.co.uk)  
Web: [www.grange-farm-holidays.co.uk](http://www.grange-farm-holidays.co.uk)

**GEOFF LEATHER**

Independent  
Funeral Directors

24 HOUR SERVICE

— CHAPELS OF REST —

PRE-PAID FUNERAL PLANS

45 Upper St James Street,  
Newport, Isle of Wight PO30 1LG

**Tel: 529090 (24-hr)**

**A1 Garage Doors IW**

Your local specialists for . . .

**Garage Doors • Roller Doors  
Remote control operators  
Security Shutters & Grilles**  
— Same day Repair Service —

• **IW 884600** •  
[www.a1specialists.co.uk](http://www.a1specialists.co.uk)

**Fancy keeping fit this year?**

Then why not help deliver *The Bridge* magazine here in Wootton.

If you wish to join our band of volunteers, please contact David Bennison on 882783.

"FRIENDS OF ST EDMUND'S"

'COME & SING EVENING'

CHRISTMAS SONGS & CAROLS

WITH

WIGHT SAX & FRIENDS

SAT 2<sup>nd</sup> DECEMBER 2023

7 – 9pm

ST EDMUND'S CHURCH, CHURCH ROAD, WOOTTON BRIDGE

Retiring Collection, Refreshments

**MEWS STEVE**

Single storey gutter cleaning.  
Exterior painting including sheds, fences and garage doors.

**FREE ESTIMATES — REASONABLE RATES**

**Please call 07908 213885**

E-mail: [StevenMarkWarren938@gmail.com](mailto:StevenMarkWarren938@gmail.com)

**COMPUWIGHT**

"Pick up your phone, Not your computer"

**COMPUTER SALES & REPAIRS**

**07780672228**

**From Just £10.50p!**

(3cm box)

to advertise your products or services in the last edition for 2023, in the runup to Christmas and the New Year.

Contact:

[bridgeads@cofeparishorwoottonbridge.org.uk](mailto:bridgeads@cofeparishorwoottonbridge.org.uk)



SERVICING  
MOT  
BRAKES  
SUSPENSION  
TYRES  
DIAGNOSIS

COLLECTION & DELIVERY (IOW ONLY) AND  
PRE-BOOKED COURTESY CARS AVAILABLE!\*

CALL US TODAY ON 01983 885510 OR VISIT  
US AT HARWOODS, LUSHINGTON HILL GARAGE,  
PO334RD

**MIKE O'DELL**

*Painter & Decorator*

30 years experience  
Registered independent  
tradesman

**07398 113635 or  
(01983) 409659**

H. V. TAYLOR & SON LTD  
INDEPENDENT FUNERAL DIRECTORS

45 GREEN STREET, RYDE, ISLE OF WIGHT, PO33 2QE.  
TEL: 01983 562082  
WWW.HVTAYLOR.CO.UK



Compassionate 24HR Service



Serving the Island since 1905 - Pre-paid funeral plans

Offering Tailor made funerals from Cremations to  
Burials as well as Direct Cremations

Funeral Directors

Mr Steve Whitehurst and Mr Richard Myers

**Solutions**  
Crystal Solutions Ltd

Caters for all your Electrical and  
Digital needs

Electrical Work

Installations, Repairs, Inspection and Design  
No Job too small

Computer & Digital

Set-up, Installations, Networks, Help, Advice  
[steve@crystal-solutions-ltd.co.uk](http://steve@crystal-solutions-ltd.co.uk)

Mobile 077 1028 2950

Tel: (01983) 529023

**ANNA CHAPLAIN**  
(Hilary Baldwin)

This is a person-centred ministry of spiritual care for older people of all faiths, cultures, spiritualities and contexts, and for their families and carers. The Anna Chaplain also offers advocacy for older people within church and community, they work with people living independently and within residential and nursing homes. The work of the Chaplain is defined by the wants and needs of their individual parish and is adapted accordingly.



For more information please contact Hilary by:  
Tel: 07769588644  
Email: [annachaplain@cofeparishofwoottonbridge.org.uk](mailto:annachaplain@cofeparishofwoottonbridge.org.uk)  
Website: <http://www.cofeparishofwoottonbridge.org.uk/anna-chaplain/>

**Military Whist Drives**

Teams of 4 are welcome to the drives held in the Methodist hall (parking in Station car park). The next meetings will be on November 3rd & 17th. £2.50 per person.

Contact Colin on 882588.



## Creature Comforts

Home Delivery Service

Tel: 01983 884270

Text: 07935 567 768

Email:

[info@creaturecomfortsiow.co.uk](mailto:info@creaturecomfortsiow.co.uk)

Complete and Frozen Foods  
Cat Dog Wild bird Squirrel etc.

Free Island Delivery



**Andrea**



## Mobile Hairdressing

Fully qualified and  
experienced hairstyling in  
your own home.  
Please phone 612395

## All Seasons Gardening Services

Regular Grass Cutting, Strimming, Hedges,  
Routine Garden maintenance, Stump grinding  
Turfing, Rotavating, Levelling,  
over-grown clearance

Wootton 882879 (serving the area since 1999)  
[www.isleofwightgardening.com](http://www.isleofwightgardening.com)



For fun, adventure and skills  
for life, come and join  
**1st Wootton Scout Group**  
Reg. Charity 1005194

Beavers 6 – 8yrs Monday 6.15 – 7.30pm  
Cubs 8 – 10½yrs Wednesday 6.30 – 8pm  
Scouts 10½ – 14yrs Tuesday 6.30 – 8.30pm  
Explorers 14 – 18yrs Thursday 7 – 9pm

All sections open to boys and girls.  
Adults welcome to train as Leaders.

Contact Ali on 07785 934644  
for further details



**HUNT FOREST GROUP**

Pritchetts Way,  
Rookley Industrial Estate,  
Rookley, Ventnor PO38 3LT  
**01983 721426**  
[www.huntforest.com](http://www.huntforest.com)

Specialists in walk behind and ride on mowers - demonstrations available upon request.

Full servicing and repairs available for all lawnmower brands with an Islandwide collection and delivery service.

**JOHN DEERE** @huntforestgroup

GROWING TOGETHER

## GERVASE LAIGHT PLUMBER

Kitchen & Bathroom Installation  
General Plumbing Maintenance

CITY & GUILDS QUALIFIED  
— Free estimates —

**RELIABLE SERVICE AT A  
REASONABLE PRICE**

**Tel: 01983 760544**

**Mobile: 07909 902004**

## DOMESTIC CLEANING & IRONING SERVICES

PRACTICAL HELP & SUPPORT  
FULLY INSURED. NO AGENCY FEES  
**PLEASE CALL ANGELA**  
**07912 432835**

**From Just £10.50p!**

(3cm box)

to advertise your products or services in the  
last edition for 2023, in the runup to Christmas  
and the New Year.

Contact:

[bridgeads@cofeparishorwoottonbridge.org.uk](mailto:bridgeads@cofeparishorwoottonbridge.org.uk)

## EXTRACTA CLEANING

For all your cleaning requirements  
Carpets & Upholstery - Sofa/Rug Cleaning  
End of Tenancy Cleanings - One off Deep Cleans  
Hoarder Clean Ups - Environmental Cleans  
Free Estimates - Fully Insured

28 Years Experience

**Home: 01983 528720**  
**Mobile: 07967531576**



## The Bridge

is Wootton's community magazine  
And it needs contributors!

Do you have a story of local interest to  
tell?

Is there a piece of local history you  
would like to share?

Do you want to publish information  
about local activities?

If you do, we'd like to hear from  
you.

We can help you put together and lay-  
out your articles;  
even if you "can't write", we can help.

If contributing to *The Bridge* is  
something that interests you, contact  
**David Bennison on 882783**

## Coffee and cakes are back! (Steve Beynon)

St Mark's coffee mornings will resume for the winter months so that you can keep warm and enjoy refreshments while chatting to friends. As well as the choice of tasty cakes, tea, coffee and hot chocolate will be available.

The sessions will be for an extended time 9 – 11.30am on:

Tuesday 21 November

Tuesday 19 December

Tuesday 23 January

Tuesday 20 February.



Feel free to drop in at any time. We would be especially pleased to welcome parents and carers with young children after the school drop off. Donations are welcome but not expected.

## IWUFT Wootton Bridge History Group

Meets on the first Friday each month in the Scout  
Hut, Wootton Rec.

Doors open 2pm. Talk at 2:30pm. New members  
welcome.

£4 per person, £3 to IWUFT members, includes  
refreshments after.

NOVEMBER 10th. Historic Film Costumes, a fantas-  
tic presentation by Andrew Wilson Jenner, who will  
be bringing some amazing costumes from famous  
movies. Not to be missed. All welcome. Usually first  
Friday, special arrangement this month.

## WOOTTON SCOUT HALL FOR HIRE.

Hall including modern  
kitchen, central heating, rear  
garden etc. Reasonable rates.

Contact Peter on 883385 or  
[petefiow@uwclub.net](mailto:petefiow@uwclub.net) for  
bookings.



## WOOTTON BRIDGE METHODIST CHURCH (Station Road)

*Minister: Revd Frances Watson*

**Sunday Morning Service 10am**

**Evening Services as announced**

### Minister's Message

Dear friends.

One of the beautiful flowers for Autumn is the Rudebekia. For those who are not familiar with these flowers they have bright yellow petals and a deep brown centre. Each year the foliage dies back and then in late spring the tuba begins to sprout again, each year bringing on twice as many blooms as the year before.

As a young girl my Dad told me that flowers last much longer when we leave them in the garden than when we cut them and bring them into the house. Consequently, I rarely cut flowers, but this year, with the Rudebekia's spreading so much, I went against his advice and cut some stems, putting them in a large vase on the dining room table.

I know they won't last long, but they have the most amazing effect on the room. When it's been cloudy outside, the sight of them on the table has really lifted my spirit. When it's been bright, the sun and heat has emphasized the colours of the blooms that they have almost shone themselves.

There are people in our life who, by spending

time with them, lift our spirit when the day has been 'cloudy'; there are those who 'light up a room'; and others who are at their best when the 'heat is on'.

I hope that, as the evenings draw in during the next couple of months and beyond, we will be people who light up other people's lives when they are down, lift their spirits, and that we find people to do the same for us when life becomes difficult.

God's blessings to you all

*Rev Frances Watson* 

### Preachers for November

5th	Nov	Ordinary	Local arrangement
12th	Nov	Ordinary	M, Izzard - Short & Snappy.
19th	Nov	Ordinary	Budd
26th	Nov	Christ the King	Akers



**FOR FUN, FRIENDSHIP  
AND FOOD.  
COME ALONG AND JOIN US.**

### WOOTTON BRIDGE TOWNSWOMEN'S GUILD

**WE HOLD OUR MEETINGS ON THE 3RD  
FRIDAY OF THE MONTH. START 2PM  
AT THE METHODIST CHURCH, STATION  
ROAD.**

**PARKING IN THE STEAM RAILWAY CAR PARK**

IF YOU WOULD LIKE TO GET TOGETHER WITH A  
GROUP TO TRY NEW THINGS, FOR FRIENDSHIP AND  
HAVE FUN.

COME TO OUR NEXT MEETING.

OR IF YOU HAVE ANY QUESTIONS CALL KATH  
ON 293589

## Available now!

Wootton Calendar 2024

£6 each

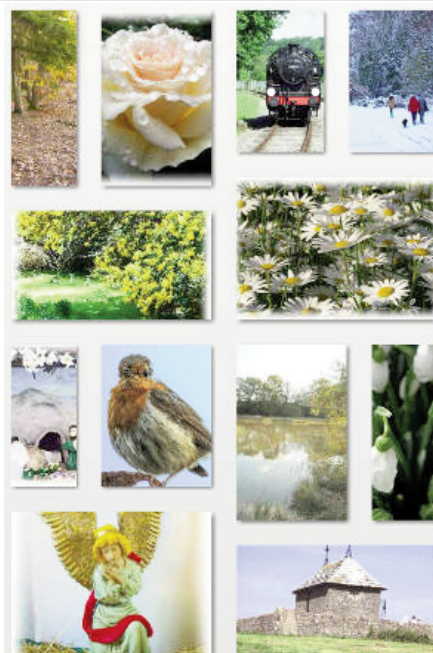
12 months  
12 photos

Call Doreen on

**883126**

or

**07954 488780**



## PARISH COUNCIL information

### Meetings:

Meetings: usually third Tuesday in every month (except August) at 7pm in The Old School, New Road - details at HIC, on village noticeboards and on website.

### Parish Councillors:

Barry Abraham  
John Ward  
Trish Evans  
Dave Burley  
Barrie Hailstone, *Chair*  
Vacancy  
Linda Pitcher, *V.Chair*  
Lee Lemon  
Terry O'Brien  
Ian Yeo  
Liz Kingston, *Clerk*  
Lorna Morey, *Assistant Clerk*

All can be contacted at the HIC on 884555.

### Office opening times:-

PARISH COUNCIL  
Mon. Closed;  
Tues. 9.00am-2.00pm;  
Wed. 9.00am-2.00pm;  
Thurs. Closed;  
Fri: 9.00am-2.00pm

### BEAT OFFICER

First Tuesday in month  
10am-12 noon or messages can be left for the Police.

## WOOTTON BRIDGE PARISH COUNCIL

5 Joanne's Walk, Brannon Way,  
Wootton Bridge, Ryde, IW  
PO33 4NX

tel: 884555

email: [clerk@woottonbridge.org.uk](mailto:clerk@woottonbridge.org.uk)

website:

[www.woottonbridge.org.uk](http://www.woottonbridge.org.uk)

Full details of all facilities available at the HIC can be obtained from the Parish Clerk or on the website.



Wootton Bridge  
PARISH COUNCIL

Report from Liz Kingston, Clerk – Wootton Bridge Parish Council.  
Telephone: 884555. Email [clerk@woottonbridge.org.uk](mailto:clerk@woottonbridge.org.uk)  
Local IW Councillor for Wootton Bridge:  
New Ward Councillor Sarah Redrup Telephone TBA  
Email [sarah.redrup@iow.gov.uk](mailto:sarah.redrup@iow.gov.uk)

*Wootton Bridge Parish Council has a Facebook page – please “like” – which displays all the latest information and you are welcome to comment on any topic.*

### Parish Councillor Vacancy

Daryll Pitcher, who we would like to thank for his help, has been disqualified as a councillor due to nonattendance for 6 months and we now have a Parish Councillor vacancy which will be filled by co-option at our November/December meeting. If anybody is interested, can they either email or phone the clerk.

### New Councillor

We are delighted to welcome Terry O'Brien, our new Councillor, who was co-opted at our October Council meeting.

### Village Partnership

If anyone is interested in joining Wootton Village Partnership where you will be able to help with organising various village events and projects and work together for the benefit of Wootton, then please email us at: [clerk@woottonbridge.org.uk](mailto:clerk@woottonbridge.org.uk).

### 20mph Zones

Wootton Bridge Parish council would like your views on whether you would support a 20mph speed limit being introduced on all side roads in Wootton. Have your say by emailing us at [clerk@woottonbridge.org.uk](mailto:clerk@woottonbridge.org.uk). We are also looking into setting up a Speed Watch and need volunteers. If you are interested, please contact us.

### Coffee Mornings

We are hoping to introduce monthly coffee mornings which will be attended by either the Police, Island Roads, Environmental Officer and/or Councillors. Please see the office window or Facebook for the dates.

### Chair's Message – Cllr Barrie Hailstone

Vandalism, unfortunately the police have failed to ID the culprit regarding the damage to the Defibrillator and our letter box cover reported in last month's edition. We are disappointed especially in view of the excellent CCTV pictures of the culprit supplied to the police, we cannot understand why progress has stagnated. We are now looking to escalate this by writing to the Police Commissioner, as we believe if we made the CCTV footage public someone would know the culprit.

There have been problems noted regarding the small gate in the Rec. The gate was removed for repairs by the IOW Council, however as it was installed originally by the Rugby Club it has now been returned to them for repair and hopefully reinstallation. I kindly ask you to note that most repairs to gates and fencing is the responsibility of the IOW Council, not us, the Parish Council. All such damage should be reported to the IOW Council for them to assess and decide on a course of action. You can still report these matters to our Clerks, who will pass them on to the IOW Council.

We have received several emails from Residents regarding the 20 mph speed limits on our side roads. If you are a concerned Resident, why don't you organise a petition for your road and drop it in to the office or email it to the clerks. If anyone is concerned regarding the speed of vehicles, why not sign up for our community Speed Watch. We have already been successful in reducing the speed of delivery vehicles by speaking to that Company's senior management.

Covid is amongst us and even one of our Councillors has caught this dreaded virus. Make sure you apply for booster jabs for Covid and Flu, particularly those of you who are vulnerable.

Do not forget we are always here to help where we can, so don't hesitate to contact us. Stay safe.

Liz Kingston – Clerk **tb**



## Spitfire flight 10th September by Vivienne Loveless

(A flight experience like no other)

Up at 0500 for the 0610 ferry to Portsmouth, as we had plenty of time we sat on the Southsea front in a cafe eating cake and having coffee. We got to the Solent Airport (Daedalus) at 0915 to find that the flight was delayed due to the fact that the previous flight had not taken off. They eventually went off at about 1015. When that flight came back, the aircraft was inspected for any damage which might have occurred during the flight, then they have to refuel her.

In the meantime, I was kitted out in a full flying suit, leather gloves, lifejacket, sick bag, knife for cutting straps if need be, and a helmet. At about 1115 everything was then ready for my flight, so I had to climb onto the seat of the cockpit, not holding onto the back of it, and then slide down so that my feet touched the floor. They show you how to raise and lower your seat, how to open the canopy, what to do in an emergency, and finally, the strapping of me securely into my parachute which also acts as your seat cushion. Close the canopy and you're good to go, but as Will the pilot was just about to start the engine the heavens opened, so it was decided to abort the flight. All the straps had to be undone again and then we could get out.

We had lunch from the cafe by the airport; a great bacon roll, which is just what I needed, and the boys kept checking for a window of opportunity to take me up. At just after 1300 they came to say that the weather had improved and we were good to go. This time we did get up, the noise and smell of the engine was something I will never forget. Then Will contacted air traffic control and they told us which holding area and runway, and we were up, up and away.

It is a strange feeling when the wings first dip but after a while you get used to it. Looking out was a bit more difficult and occasionally I would be looking too high or too low, but when you see the beautiful Island bathed in sunshine, it was magical.

We flew across the Solent to Ryde and onto the Needles, where we did a couple of passes, then right around the Island so I saw places that I had never seen from that angle before, then back towards Wootton which we flew over a couple of times, including a victory roll which is like being in a giant washing machine; that was the 'worse' bit of the flight. I also got to fly the aircraft. Coming into land another plane wanted to take off, but they were politely reminded by air traffic control that they did not chose their time for take off. It was a smooth landing and I had a great beam on my face as we came back to the holding area.

All the crew were super and signed a poster of GUILD-A which had been built in 1944, so she is an old girl of 79 years. It listed the history of the spitfire.

tb



**'The Bridge'**  
is delivered free  
to over 1,750 homes and  
businesses in Wootton

Note to 'Bridge Deliverers'  
the December 2023 issue will be avail-  
able to pick up from the Churches on  
**SATURDAY 25th November 2023**

## Solution - October Sudoku

2	5	8	4	7	9	3	6	1
1	7	3	6	8	5	9	4	2
9	6	4	2	1	3	5	7	8
4	9	2	5	6	7	1	8	3
7	8	5	1	3	4	2	9	6
6	3	1	8	9	2	4	5	7
5	2	7	3	4	6	8	1	9
8	4	6	9	2	1	7	3	5
3	1	9	7	5	8	6	2	4

If you have any particular  
areas of concern, or want to  
report any incidents, please  
either visit the Parish Office  
in Brannon Way, or contact  
us by phone or email

Telephone:  
01983 884555

Email:  
clerk@woottonbridge.org.uk

		4	5	6	2	8	9	
	6		8	1	9			5
					4	1		6
6		8	4	5	7	9	3	
					3	6		
9	3		2	8			5	
		9	7	3			6	
		3		4	8			
	4	6	9	2	1			

## SUDOKU

Fill in the grid with digits in  
such a manner that every row,  
every column and every 3x3  
box accommodates the digits  
1-9, without repeating any.

## REMEMBRANCE



## LEST WE FORGET

Any article published in  
*The Bridge* is copyright and may  
not be used without the author's  
permission.

**'THE BRIDGE'**  
Copy deadline date:  
FRIDAY 10th NOVEMBER 2023  
(12 noon) for DEC/JAN 2023/2024

The publisher does not necessarily hold  
the same views as those expressed by  
contributors and reserves the right to  
refuse or alter material.

### ST EDMUND'S and ST MARK'S CHURCH

Churchwardens: Ann Capps and Mary Peters

For Baptisms, Weddings and Funerals please contact us at:  
stedmundsandstmarks@gmail.com or leave a message on 01983 301880  
(we will respond as soon as we can)

Published by St Edmund's and St Mark's Church and produced by members of  
The Bridge Magazine Group. Printed by Bishops Printers 023 9233 4900

All queries concerning  
*The Bridge* magazine  
please telephone  
David Bennison on  
882783 or the  
Churchwardens.

### E-mail Addresses

Send your advertisements for inclusion  
in 'The Bridge' to:  
bridgeads@cofeparishofwoottonbridge.org.uk

Send your articles, news, diary dates and comments  
about 'The Bridge' to:  
thebridge@cofeparishofwoottonbridge.org.uk